

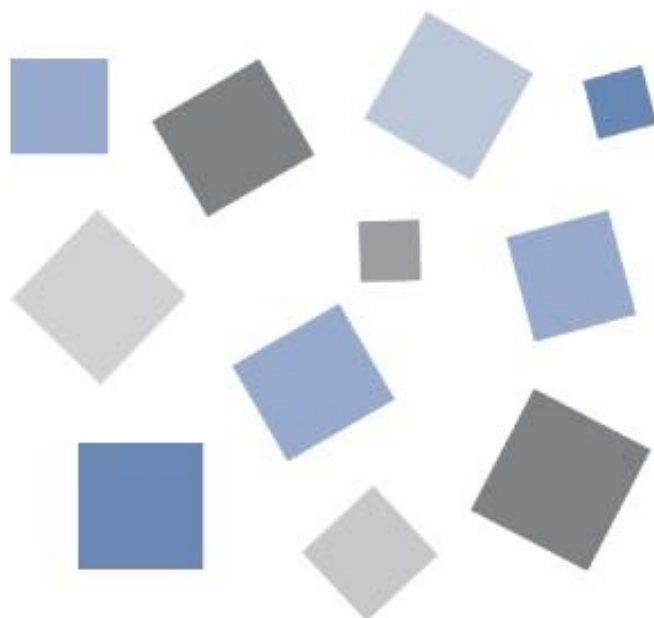
# G-REMOTE

## Remote Control Service

### USER' S Manual

MANUAL No. G-REMOTE-UM-151-02

### G-DRIVE



# GRAPHTEC



## Table of contents

<b>1. INTRODUCTION</b> .....	<b>4</b>
1.1 Precautions for use.....	4
1.2 About registered trademarks.....	4
1.3 About copyright.....	4
<b>2. PREPARATION</b> .....	<b>5</b>
2.1 Target model .....	5
G-REMOTE applicable models.....	5
G-DRIVE applicable models .....	5
2.2 Operating environment .....	5
<b>3. SERVICE DETAILS</b> .....	<b>6</b>
3.1 G-DRIVE .....	6
3.2 G-DRIVE FTP server .....	9
Prohibited characters .....	9
3.3 GL series data logger .....	9
GL series compatible models .....	9
What is the backup function?.....	10
Backup capacity .....	10
Data logger settings .....	11

# 1. Introduction

---

Thank you for choosing a Graphtec product.

This is a cloud service that can be used by customers who have purchased a GL series data logger.

You can use the G-DRIVE function to store recorded data on a server.

## 1.1 Precautions for use

- ① No part of this publication may be reproduced, stored in a retrieval system, or transmitted, in any form or by any means, without the prior written permission of Graphtec Corporation.
- ② The product specifications and other information in this manual are subject to change without notice.
- ③ While every effort has been made to provide complete and accurate information, please contact your sales representative or nearest Graphtec vendor if you find any unclear or erroneous information or wish to make other comments or suggestions.
- ④ Notwithstanding the stipulations in the preceding paragraph, Graphtec Corporation assumes no liability for damages resulting from either the use of the information contained herein or the use of the product.
- ⑤ Performance may not be satisfied depending on the usage environment of this product. In that case, please review the usage environment.

## 1.2 About registered trademarks

- Microsoft and Windows are registered trademarks or trademarks of Microsoft Corporation in the United States and other countries.
- All names of companies, brands, logotypes, and products appearing in this manual are the trademarks or registered trademarks of their respective companies.

## 1.3 About copyright

This instruction manual is copyrighted by Graphtec Corporation.

## 2. preparation

### 2.1 Target model

Please note that the applicable models for each service are different for G-REMOTE and G-DRIVE.

#### G-REMOTE applicable models

- GL260 (wireless LAN)
- GL860 (wired LAN /wireless LAN)

\*Optional B-568 is required for wireless LAN connection.

\*The number of devices that can be connected depends on the number of simultaneous accesses in your contract.

#### G-DRIVE applicable models

- GL260 (wireless LAN)
- GL240 (wireless LAN)
- GL860 (wired LAN /wireless LAN)
- GL840 (wired LAN /wireless LAN)
- GL980 (wired LAN)
- GL2000 (wired LAN)
- GL7000 (wired LAN)
- GLT400 (wired LAN /wireless LAN)

\*Optional B-568 is required for wireless LAN connection.

\*The number of devices that can be connected depends on the number of simultaneous accesses in your contract.

### 2.2 Operating environment

Please use this service under the following environment.

Item	environment
PC	OS and PC equipped with a web browser
Compatible browser	Google Chrome (recommended), Microsoft Edge, Firefox, Safari *Internet browser that supports HTML5
Internet connection	To use G-REMOTE and G-DRIVE, you need an environment where you can connect to the Internet. *Customers are responsible for preparing the equipment and equipment required to connect to the Internet.

# 3. Service details

## 3.1 G-DRIVE

You can check, download, and delete files uploaded by GL series data loggers.

**Information**

**Logout**

**Toggle icon**

**Status display**

**File operation icon**

**File/folder search**

**File list**

**Select**

**File name**

**Update date**

**File size**

**Download**

**Number of displayed items**

**Delete**

**Page**


Item	Description
Toggle icon	G-DRIVE/G-REMOTE/ACCOUNT
Information	Notifications
Logout	Click this link to log out.
Status display	The FTP server status Last updated: the date and time when the file was last updated. Number of files: the number of files uploaded to the FTP server. Capacity: the capacity of the file uploaded to the FTP server.
File operation icon	Create folder: Creates a folder in the current display location. Download selected items: Download multiple files selected in the selection column. If you download multiple files, they will be compressed and downloaded in ZIP format.

	Delete selected items: Delete multiple files selected in the selection column.
File/folder search	Search for files/folders. Search results will be displayed in a list.
File list	Files and folders on the FTP server
Select	You can select them by checking the boxes. Selection across pages is not possible.
File name	The file or folder name
Update date	The modification date of a file or folder
File size	File size
Download	Download files or folders individually. If you select a folder, it will be compressed and downloaded in ZIP format.
Number of displayed items	Set the number of files and folders to be displayed on one screen. You can choose from 10, 30, 50, and 100.
Delete	Delete individual files or folders.
Page	If there is more than one screen of displayed files, the page will be switched and displayed.

## File/folder search

You can search for files/folders.

Display the search results in a list.



Selected folder: /

Search file/folder

File Path

Number of displayed items 10

Select	File name	Update date	File size	File path	Download	Delete
<input type="checkbox"/>	210705-224306.GBD	2023/05/10 13:51:13	512.45KB	/		
<input type="checkbox"/>	220520-090018_BAK1.GBD	2023/05/10 13:51:17	11.10KB	/		
<input type="checkbox"/>	220520-144909_BAK1.GBD	2023/05/10 13:51:21	10.63KB	/		
<input type="checkbox"/>	200706-144545_BAK1.GBD	2020/07/06 14:45:55	14.49KB	Backup/		
<input type="checkbox"/>	200706-144610_BAK1.GBD	2020/07/06 14:46:19	14.27KB	Backup/		
<input type="checkbox"/>	200706-144848_BAK1.GBD	2020/07/06 14:49:03	15.44KB	Backup/		
<input type="checkbox"/>	200706-173200.GBD	2020/07/07 08:52:35	7.78MB	Backup/		
<input type="checkbox"/>	200707-085246.GBD	2020/07/07 08:53:00	34.72KB	Backup/		
<input type="checkbox"/>	200707-100454.GBD	2020/07/07 10:05:07	14.25KB	Backup/		
<input type="checkbox"/>	200707-100508.GBD	2020/07/07 10:05:21	14.31KB	Backup/		

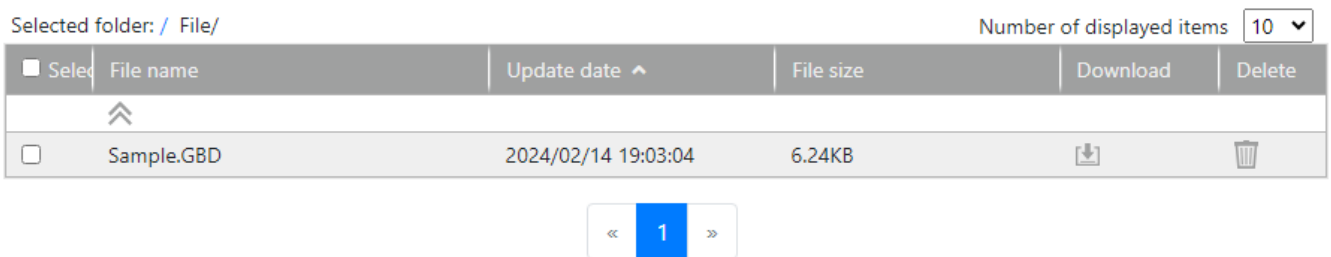
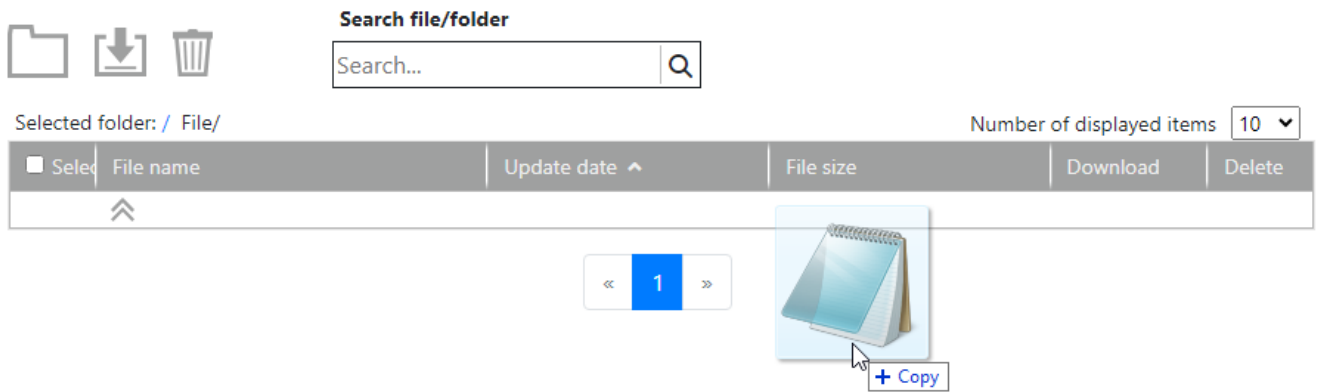
< 1 2 3 4 5 6 7 ... 27 >

Item	Description
File Path	The storage path of the file/folder that matches the search content

## File upload

You can upload files by dragging and dropping them onto the G-DRIVE screen.

You can upload files smaller than 20MB.





## 3.2 G-DRIVE FTP server

This is an FTP server for uploading and downloading data. By connecting with general FTP client software, you can upload and download any file, even if it is not a GL series.

Item	Specification
hostname	ftp.grm-one.net
Supported protocols	FTP•FTPS
SSL certification	Explicit connection (Explicit)
SSL version	TLS1.0•TLS1.1•TLS1.2
server capacity	1GB (standard), 3GB, 5GB, 10GB *Depends on plan
Number of concurrent accesses	3 accesses (standard), 15 accesses, 30 accesses *Depends on plan
login account	This is the same as the WEB login account. You will be notified when you register for free.

### Prohibited characters

Do not use the following characters in file and folder names.

- Full-width characters
- Half-width kana characters
- The following symbols ¥ / : \* ? “ < > |

\*Only / can be used as a delimiter between folders.

\*Please do not use folders or files with the same name that differ only in uppercase and lowercase letters.

## 3.3 GL series data logger

By using the FTP backup function of the GL series data logger, you can upload data to the G-DRIVE 's FTP server.

### GL series compatible models

Model	Backup interval	Recording format (GBD)	Recording format (CSV)
GL240	Off•1•2•6•12•24 hours	○	○ Ver.1.43 or later
GL260	Off•1•2•6•12•24 hours per file	○	○
GL840-M/WV	Off, 1, 2, 6, 12, 24 hours, each file	○	○ Ver.1.32 or later
GL860	Off, 1, 2, 6, 12, 24 hours, each file	○	○
GL980/GL2000	Off•1•2•6•12•24 hours•Specified time	○ Ver.1.13 or later	○ Ver.1.13 or later
GL7000	Off•1•2•6•12•24 hours	○	○ Ver.2.10 or later
GLT400	Off, 1, 2, 6, 12, 24 hours, each file	○	○

#### \*Note

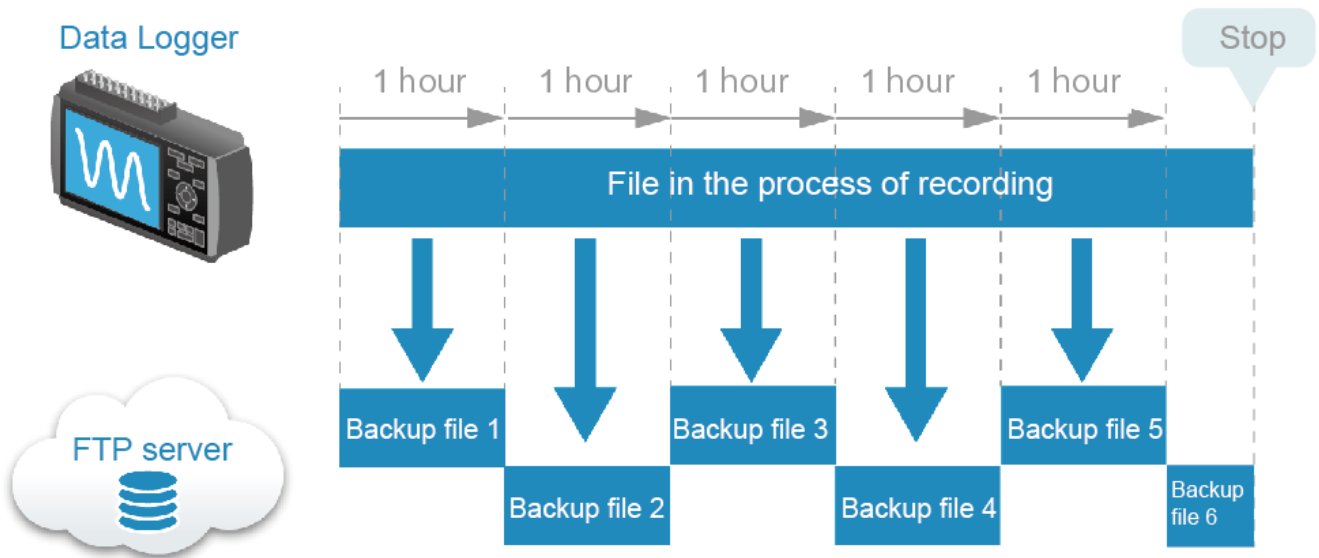
- For details on the settings for each model, please refer to the instruction manual for each model.
- To perform backup settings for the GL7000, an optional display unit (GL7-DISP) is required.
- Backup interval "For each file" can be selected when the deletion function after successful FTP backup is enabled.

If the product you are using does not meet the version requirements, you can download it from the Graphtec website.

<http://www.graphteccorp.com/support/index.html>

**What is the backup function?**

The data logger uses the FTP backup function to upload data to the G-DRIVE 's FTP server. While recording the main recorded data, the recorded data is uploaded to the FTP server at each backup interval.



**Backup capacity**

Please use the table below as a guide for the capacity required for backup.

Number of channels	sampling interval	1GB recording time
8ch	1ms	Approximately 14 hours
10ch	100ms	Approximately 50 days
10ch	1 second	Approximately 500 days
100ch	1 minute	Approximately 3000 days
200ch	10 minutes	Approximately 16000 days

## Data logger settings

This is the FTP backup setting method for each GL series. Please refer to the instruction manual for network settings.

### GL240 settings

\*Note

To perform backup settings for GL240, an optional wireless LAN unit (B-568) is required.

- ① Set any backup time other than Off from DAT menu > Backup settings.



- ② Please set the save folder to "FTP".

You can change the folder name on the FTP server by changing "Backup". If you want to create a folder hierarchy on the FTP server, enter "Folder1/Folder2" and the data will be uploaded as shown below. Please refer to " Prohibited characters " for characters that cannot be used.



- ③ From the LAN menu, set the wireless LAN as a station and set it as a wireless LAN base unit that can connect to the Internet.



- ④ Please refer to the following settings in LAN Menu > ST-IP Settings > Server Settings > FTP Server Settings > FTP Client.



Item	Setting details
FTP server	Please enter the FTP host listed on the usage notice.
Username	Please enter the WEB/FTP login ID written on the usage notice.
Password	Please enter the login password written on your usage notice.
Port number	Please set number 21.
PASV mode	Basically, set it to On.

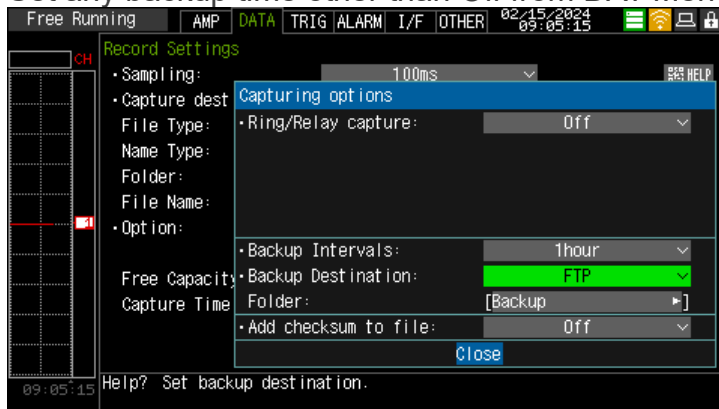
- ⑤ After completing the settings, please perform the "FTP server connection test". If you are unable to connect correctly, please check the input items above and check your internet connection.

## GL260 settings

### Note

To perform backup settings for, the optional wireless LAN unit (B-568) is required.

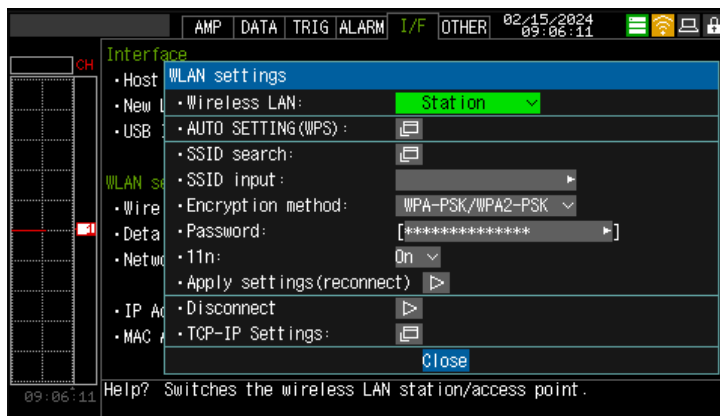
- ① Set any backup time other than Off from DAT Menu > Options > Backup Settings.



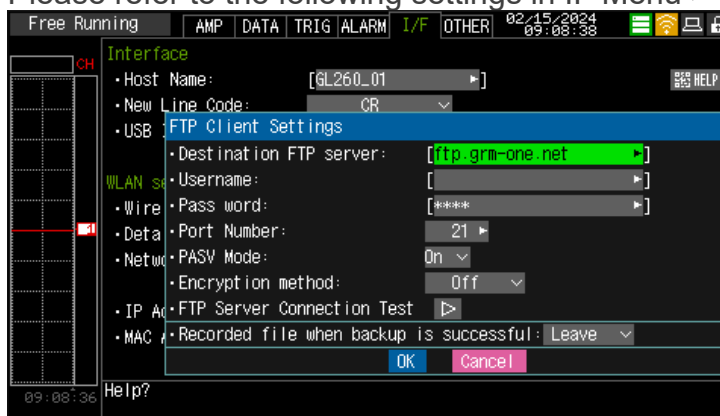
- ② Please set the save folder to "FTP".  
 You can change the folder name on the FTP server by changing "Backup". If you want to create a folder hierarchy on the FTP server, enter "Folder1/Folder2" and the data will be uploaded as shown below. Please refer to " Prohibited characters " for characters that cannot be used.



- ③ From the IF menu, set the wireless LAN setting to station, and set it to a wireless LAN base unit that can connect to the Internet.



- ④ Please refer to the following settings in IF Menu > Network Settings > FTP Client Settings.



Item	Setting details
FTP server	Please enter the FTP host listed on the usage notice.
Username	Please enter the WEB/FTP login ID written on the usage notice.
Password	Please enter the login password written on your usage notice.
Port number	Please set number 21.
PASV mode	Basically, set it to On.
Encryption method	Basically, set Explicit (explicit connection).

- ⑤ After completing the settings, please perform the "FTP server connection test". If you are unable to connect correctly, please check the input items above and check your internet connection.

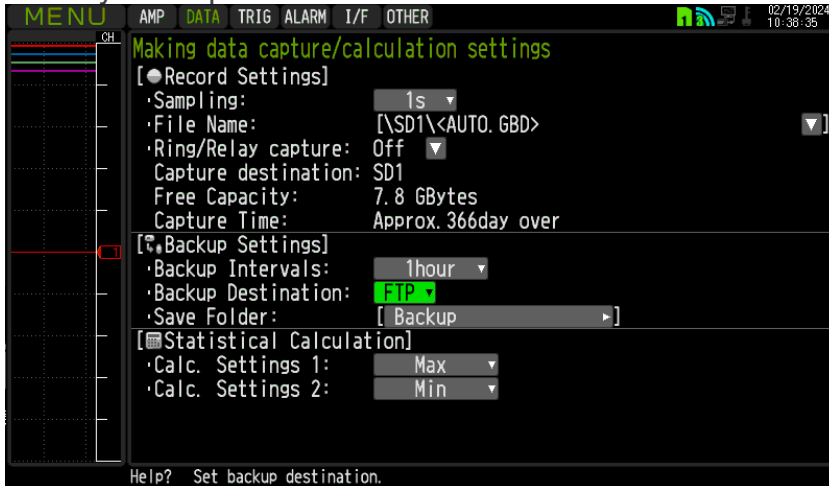
## GL840-M/WV settings

\*The following are for a wired LAN connection.

**\*Note**

To perform backup settings via wireless LAN connection, the optional wireless LAN unit (B-568) is required.

- ① Set any backup time other than Off from DAT menu > Backup settings.



- ② Please set the save folder to "FTP".  
You can change the folder name on the FTP server by changing "Backup".  
Please refer to " Prohibited characters " for characters that cannot be used .
- ③ Please refer to the following settings in  
I/F Menu > FTP/WEB Server Settings > FTP Client.

Item	Setting details
FTP server	Please enter the FTP host listed on the usage notice.
Username	Please enter the WEB/FTP login ID written on the usage notice.
Password	Please enter the login password written on your usage notice.
Port number	Please set number 21.
PASV mode	Basically, set it to On.

- ④ After completing the settings, please perform the "FTP server connection test". If you are unable to connect correctly, please check the input items above and check your internet connection.

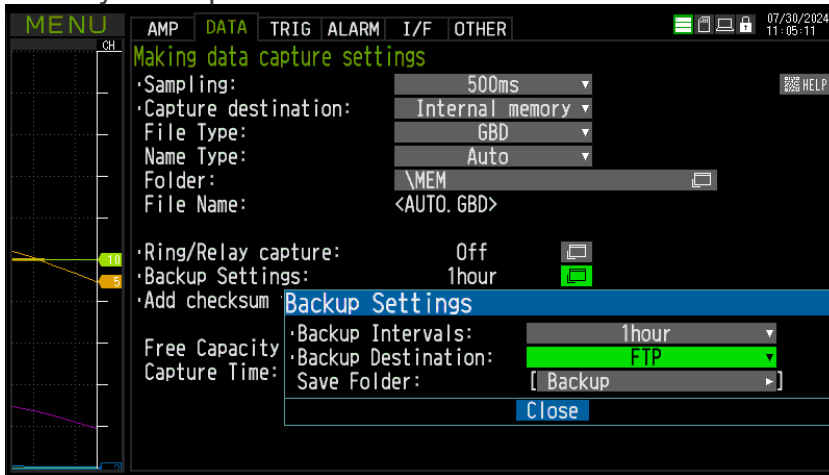
## GL860 settings

\*The following are for a wired LAN connection.

**\*Note**

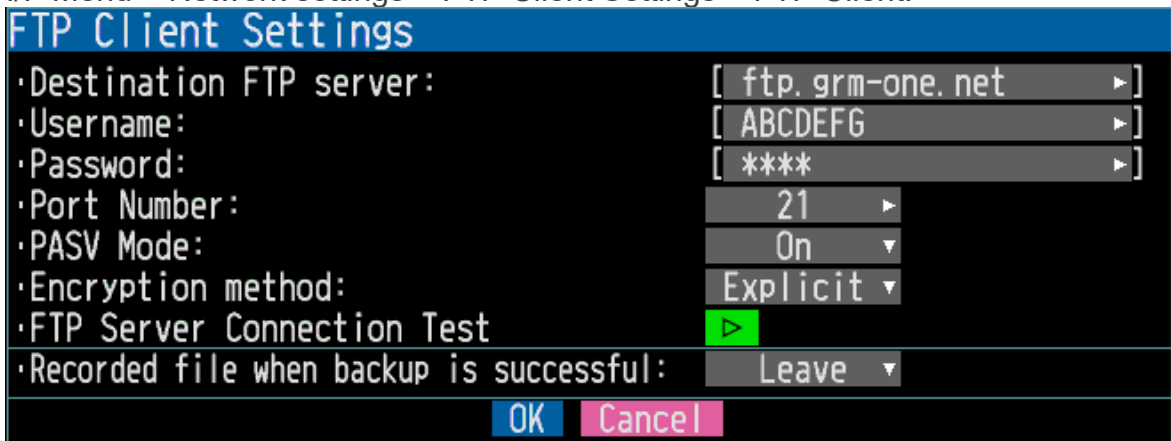
To perform backup settings via wireless LAN connection, the optional wireless LAN unit (B-568) is required.

- ① Set any backup time other than Off from DAT menu > Backup settings.



- ② Please set the save folder to "FTP".  
You can change the folder name on the FTP server by changing "Backup".  
Please refer to " Prohibited characters " for characters that cannot be used .

- ③ Please refer to the following settings in  
I/F Menu > Network settings > FTP Client Settings > FTP Client.



Item	Setting details
FTP server	Please enter the FTP host listed on the usage notice.
Username	Please enter the WEB/FTP login ID written on the usage notice.
Password	Please enter the login password written on your usage notice.
Port number	Please set number 21.
PASV mode	Basically, set it to On.
Encryption method	Basically, set Explicit (explicit connection).

- ④ After completing the settings, please perform the "FTP server connection test". If you are unable to connect correctly, please check the input items above and check your internet connection.

## | GL980/GL2000 settings

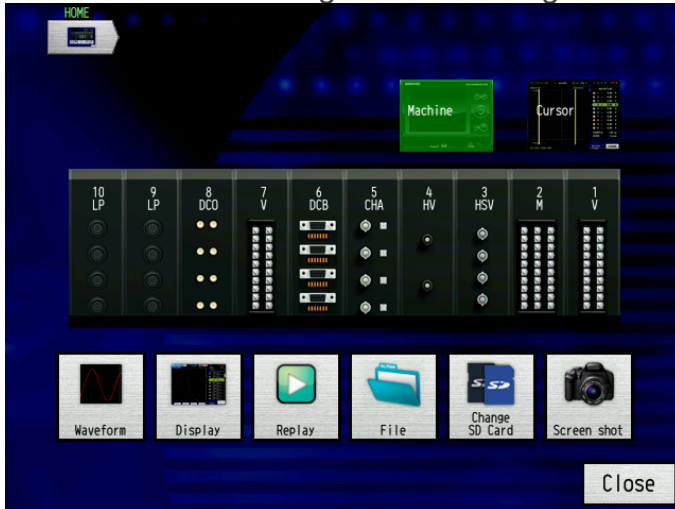
\*Please refer to GL840 for GL980/GL2000.

## | GL7000 settings

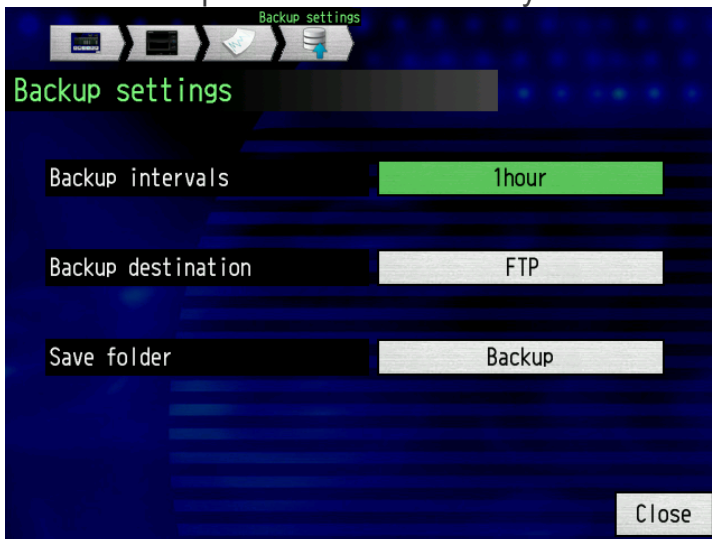
\*Note

To perform backup settings for GL7000, an optional display unit (GL7-DISP) is required.

- ① Select Main unit settings > Data settings > Backup settings from the HOME button.



- ② Set the backup interval to an arbitrary time.



- ⑤ Please set the backup destination to "FTP".  
You can change the folder name on the FTP server by changing "Backup".  
Please refer to " Prohibited characters " for characters that cannot be use



Specifications are subject to change without notice.

G- REMOTE USER'S Manual  
G- REMOTE -UM-151 -02

Published January 12, 2024  
2nd Edition

**GRAPHTEC CORPORATION**

---



**GRAPHTEC**

