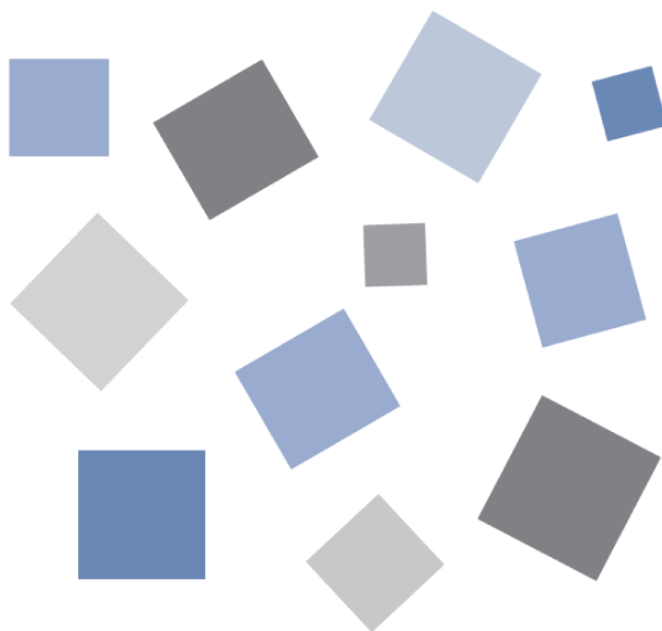


Download **App**

Application Software

USER' S MANUAL

MANUAL No. APS(DownloadApp)-UM-151



GRAPHTEC

Contents

Chapter 1	Introduction	4
1.1.	Usage Notes	4
1.2.	Trademarks	4
1.3.	Copyright	4
Chapter 2	Operating Environment	5
Chapter 3	Software Installation	6
Chapter 4	Overview	7
4.1.	Connection Example	7
	Example of Connecting to a GRM-ONE BASIC FTP Server	7
	Example of Connecting to an FTP Server of a GL Series Data Logger	8
4.2.	Basic Functions	9
	Connecting and disconnecting from an FTP server	9
	File list display	9
	File downloading	9
	File deleting	9
	Auto file downloading	10
Chapter 5	Starting and Closing the Software	11
5.1.	Starting the Software	11
5.2.	Closing the Software	12
Chapter 6	Windows	13
6.1.	Window Structure	13
6.2.	Connection settings window	14
	Common settings window	14
	Basic settings window	15
	Advanced settings window	16
6.3.	Main Window	17
	Information	18
	List of files and folders	19
	PC folder selection	19
6.4.	Timer Settings Window	20
Chapter 7	Connection	21
7.1.	Connecting to an FTP server of a GL series GL7000	21
	Connection environment	21
	Connection settings	21
7.2.	Connecting to a GRM-ONE BASIC FTP Server	23
	Connection environment	23

Connection settings	23
Chapter 8 Downloading and Deleting Files.....	25
8.1. Specified File Download Function	25
8.2. File Deletion Function.....	26
8.3. Auto Download Function	27
Chapter 9 Specifications.....	30

Chapter 1 Introduction

Thank you for using this software.

This software is a Windows desktop application that connects to a GRM-ONE BASIC cloud service FTP server or an FTP server of a GL series data logger and downloads log files and the like.

1.1. Usage Notes

1. Copying or transferring any or all of the contents of this document is prohibited.
2. The contents of this manual and the specification of the product are subject to change without notice.
3. Every effort has been made to ensure the quality and reliability of this document and product, but should you find unclear points or errors, please contact Graphtec.
4. Graphtec will not be held responsible for the effects caused as a result of using this document or product, regardless of the statement 3.
5. The performance of this product may not be satisfied depending on the operating environment. If this occurs, review your operating environment.

1.2. Trademarks

- Microsoft and Windows are registered trademarks or trademarks of Microsoft Corporation in the United States and/or other countries.
- .NET Framework is a registered trademark or trademark of Microsoft Corporation in the United States and/or other countries.
- Other company names, logos, product names, and the like are trademarks or registered trademarks of their respective companies.

1.3. Copyright

Graphtec Corporation owns the entire copyright to this instruction manual.

Chapter 2 Operating Environment

The following table shows the PC requirements.

Item	Requirement
OS	Windows 11 (64bit) * Meet system requirements of the OS Windows10 (32Bit/64Bit) Windows8.1 (32Bit/64Bit) * Operating systems that the OS manufacturer no longer supports are also not supported by Graphtec. * .NET Framework 4.5 or later is required. * Please use a PC that meets the system requirements.
CPU	Intel Core 2 Duo or better recommended
Memory	1 GB or more recommended
HDD	32 GB or more recommended
Display	Display resolution 800x600 or more, 65535 colors or more (16 bit)
Network	Environment that allows Internet connection is required when connecting to GRM-ONE BASIC. * Environment that allows communication through port 21 and ports 30000 to 35000 are required to establish an unencrypted connection. Environment that allows communication through port 21, 990 and ports 30000 to 35000 are required to establish an encrypted connection. For details on communication ports, consult your network administrator in charge of your Internet connection.

* Check

- Running multiple instances of this software may require an operating environment that is better than the recommended environment.
-

Chapter 3 Software Installation

This software can be downloaded from our website.

Download "DownloadApp" of the applicable measuring instrument product at the following URL.

<http://www.graphteccorp.com/support/software/instruments.html>

Decompress the downloaded file, run it, and follow the install instructions to install the software.

* Check

- When this software is installed on the PC in which the Microsoft .NET Framework 4.5 is not installed, the online installer of .NET Framework 4.5 starts when the installer starts. Follow the installer's instructions to install.

When not connected to the network, execute dotnetfx45_full_x86_x64.exe in the copied folder to install.

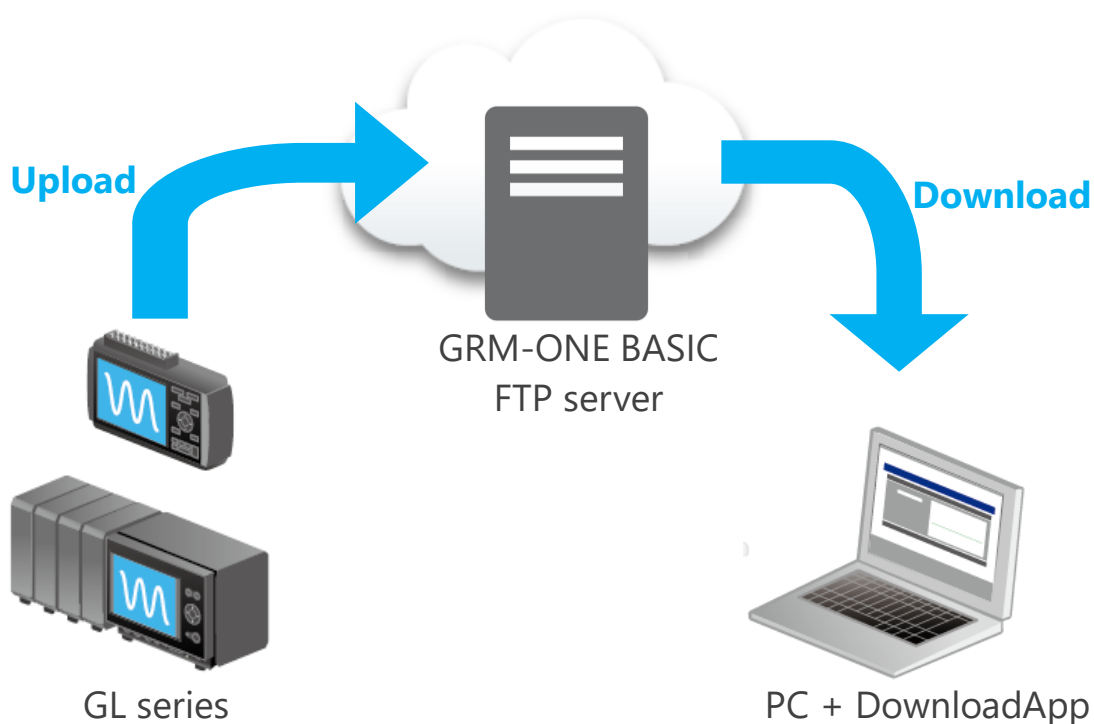
Chapter 4 Overview

This software can be used to connect to a GRM-ONE BASIC FTP server or an FTP server of a GL series data logger and download the files on the FTP server through an Internet or LAN connection.

4.1. Connection Example

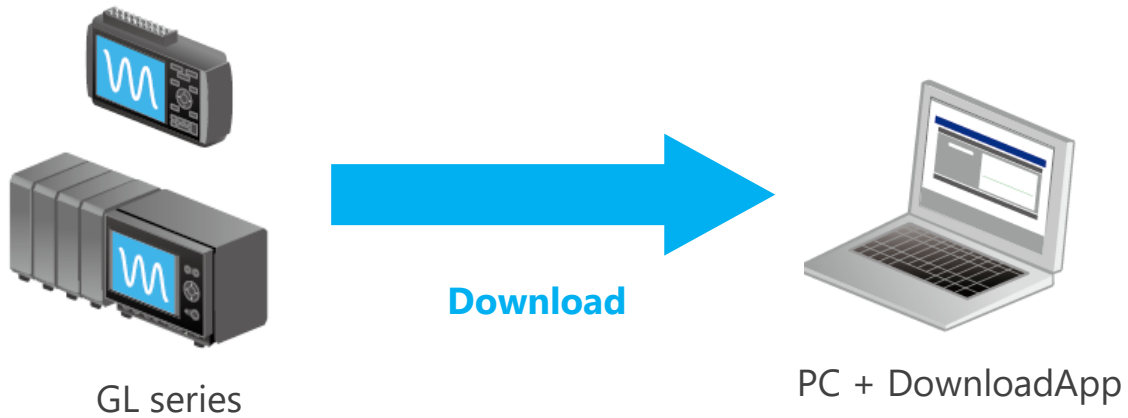
Example of Connecting to a GRM-ONE BASIC FTP Server

On a GL series data logger equipped with a wired or wireless LAN interface that can connect to the Internet, data is automatically uploaded to a GRM-ONE BASIC FTP server using the FTP backup function. This software can be used to connect to the FTP server and download the uploaded log files.



Example of Connecting to an FTP Server of a GL Series Data Logger

This software is connected to an FTP server of a GL series data logger equipped with a wired or wireless LAN interface, and log files are downloaded.



4.2. Basic Functions

The basic functions are described below.

Connecting and disconnecting from an FTP server

This software can connect and disconnect from a compatible FTP server, such as a GRM-ONE BASIC FTP server or an FTP server of a GL series data logger. In addition, the software supports encrypted connection (explicit encryption) for safe communication.

File list display

Files and folders in the connected FTP server are listed.

* Notes

Using full-width characters may cause text garbling. When connecting to a GL series data logger, use the "Shift JIS" setting.

File downloading

Files and folders shown in the file list can be downloaded to a local PC folder. All uploaded files can be downloaded, regardless of their type.

File deleting

Files or folders shown in the file list can be deleted from the FTP server.

* Check

- You cannot delete files if you log into the FTP server using anonymous.
 - Be careful when deleting files.
-

Auto file downloading

Files or folders can be downloaded automatically at specified times. In addition, it is also possible to automatically delete the original files on the FTP server side after downloading.

* Check

- Downloading may not work properly if auto downloading is performed on a folder containing files in the middle of logging on the GL series.
 - If the download destination already has a file with the same name, downloading is not performed. But, the original file will be deleted.
-

Chapter 5 Starting and Closing the Software

5.1. Starting the Software

After installing the software, from the Windows taskbar, select the Start button, Graphtec, DownloadApp, and then DownloadApp to start the software.

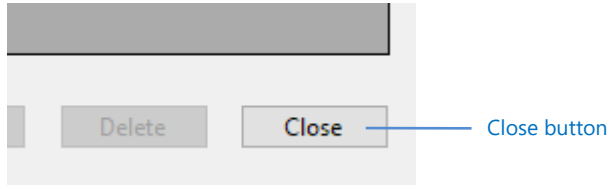
When you start the software for the first time, a language selection window opens.

Select the language of your choice.



5.2. Closing the Software

To close the software, click Close in the lower right of the main window.



* Check

- Settings that were entered last are saved when you close a software. The settings are not saved if you close the software in a different manner (e.g., forced termination).
 - When you close the software, the auto download function in progress will also be closed.
-

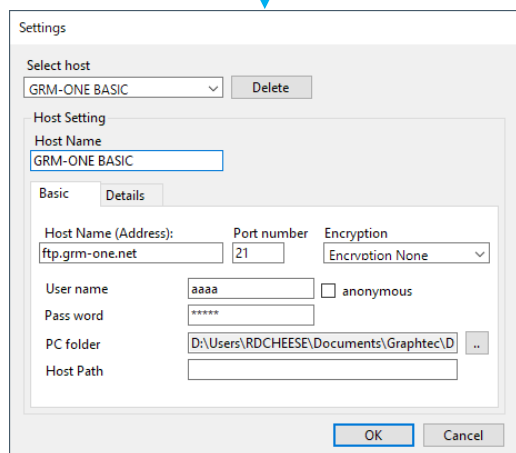
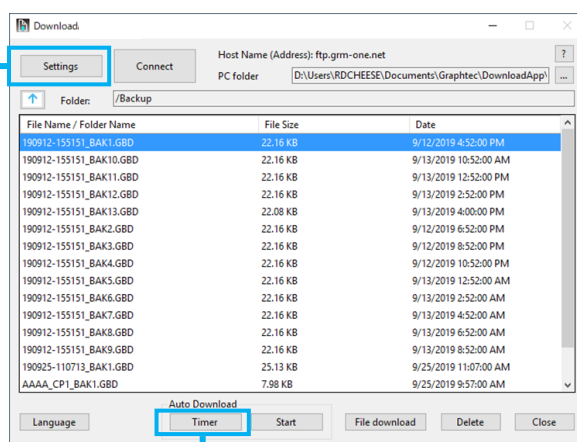
Chapter 6 Windows

6.1. Window Structure

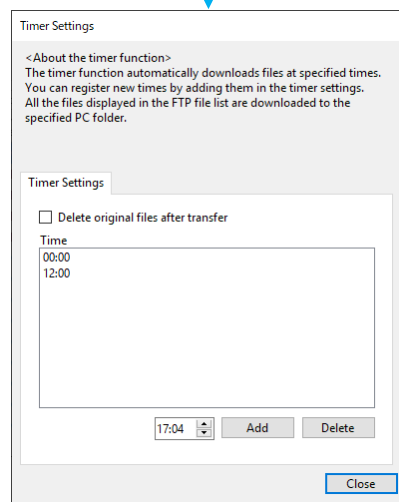
The window structure of this software is shown below.

- Main window
- Connection settings window
- Timer settings window

Main window



Connection settings window

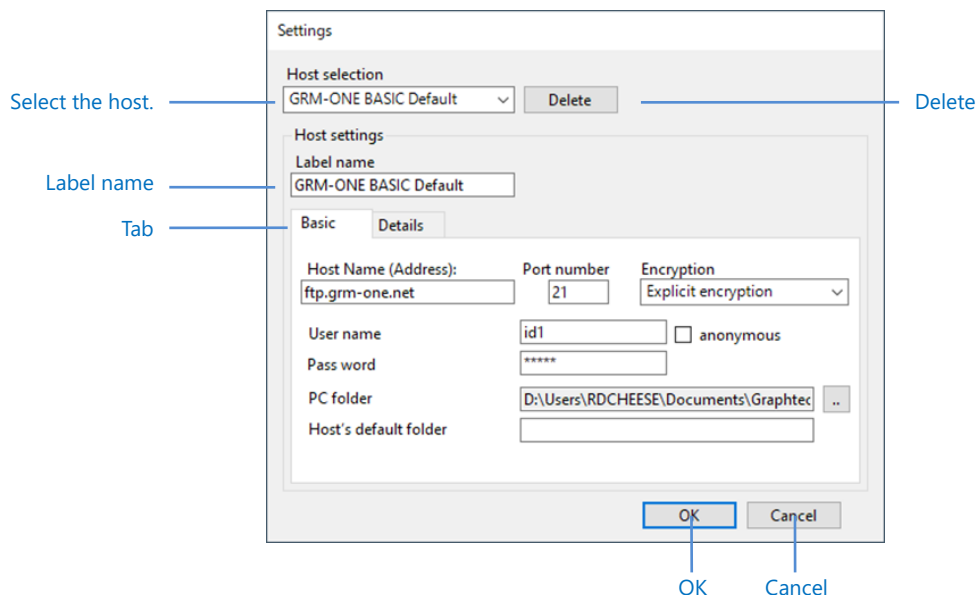


Timer settings window

6.2. Connection settings window

This window is used to specify settings for connecting to an FTP server.

Common settings window



Item	Description
Host selection	Select the connection destination. When the software is started the first time, only "Default" and "GRM-ONE BASIC Default" is registered. Up to 10 hosts can be registered.
Delete	Deletes a registered host.
Label name	Enter the label name. You cannot register a host if this is left blank.
Tab	Switches between basic settings and advanced settings.
OK	Applies the settings and closes the window. If a new label name was entered, a new host will be registered. If you click this button when an existing host is selected, the existing settings will be changed.
Cancel	Closes the window without applying the settings.

Basic settings window

Settings

Host selection
GRM-ONE BASIC Default [Delete]

Host settings
Label name
GRM-ONE BASIC Default

Basic Details

Host Name (Address): ftp.grm-one.net Port number 21 Encryption Explicit encryption

User name id1 ☐ anonymous

Pass word *****

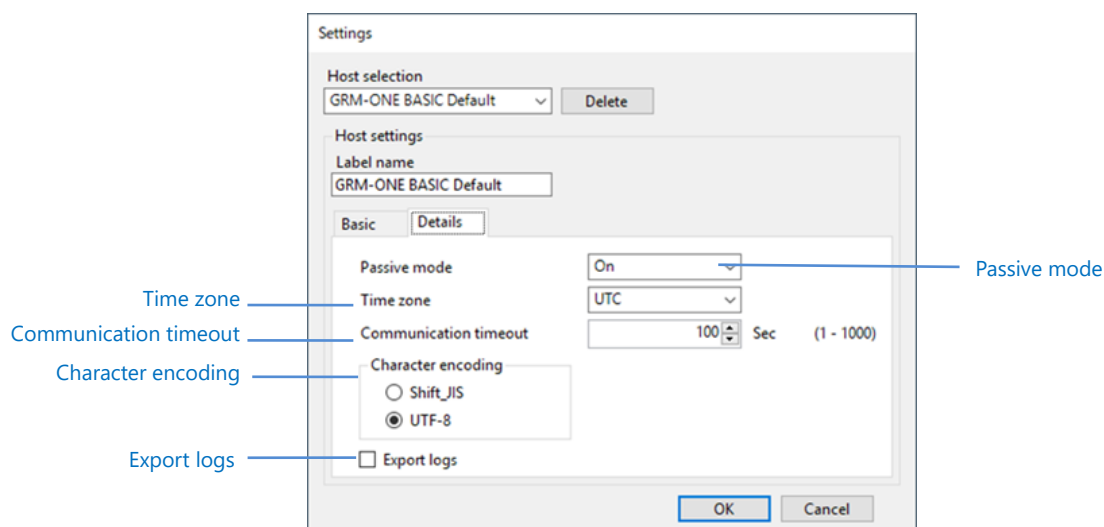
PC folder D:\Users\RDCHEESE\Documents\Graphtec ..

Host's default folder

OK Cancel

Item	Description						
Host name (address)	Enter the host name or IP address of the FTP server.						
Port number	Enter the port number. The default number is 21.						
Encryption	<p>Enables or disables encryption.</p> <table> <tr> <th>Item</th><th>Description</th></tr> <tr> <td>No encryption</td><td>Encryption is disabled.</td></tr> <tr> <td>Explicit encryption</td><td>Explicit encryption is used.</td></tr> </table> <p>* For details on the encryption method, consult the administrator in charge of the FTP server.</p>	Item	Description	No encryption	Encryption is disabled.	Explicit encryption	Explicit encryption is used.
Item	Description						
No encryption	Encryption is disabled.						
Explicit encryption	Explicit encryption is used.						
User name	Enter the login user name of the FTP server.						
anonymous	Select this check box to log in using the anonymous user. If you log in using the anonymous user, only downloading as possible. Login may not be possible depending on the FTP server.						
Password	Enter the login password of the FTP server.						
PC folder	Set the default download destination folder.						
Host's default folder	Set the default folder on the FTP server.						

Advanced settings window

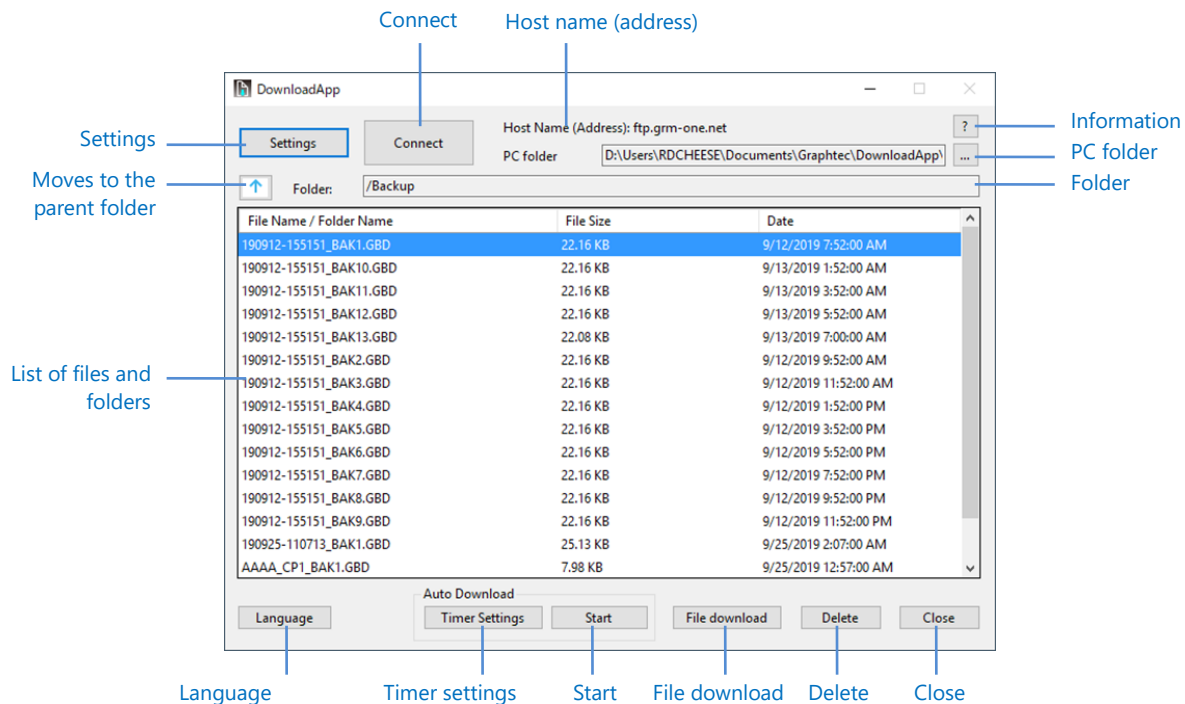


Item	Description						
Passive mode	<p>Sets the passive mode.</p> <table border="1"> <thead> <tr> <th>Item</th><th>Description</th></tr> </thead> <tbody> <tr> <td>Off</td><td>Use this setting to communicate with an FTP server in a normal network environment.</td></tr> <tr> <td>On</td><td>Use this setting to communicate with an external FTP server in a firewall environment.</td></tr> </tbody> </table> <p>* If you cannot connect to the FTP server, regardless of whether the passive mode is on or off, consult the FTP server administrator or network administrator.</p>	Item	Description	Off	Use this setting to communicate with an FTP server in a normal network environment.	On	Use this setting to communicate with an external FTP server in a firewall environment.
Item	Description						
Off	Use this setting to communicate with an FTP server in a normal network environment.						
On	Use this setting to communicate with an external FTP server in a firewall environment.						
Time zone	The date shown in the file/folder list is adjusted according to the region.						
Communication timeout	Set the communication timeout with the FTP server. Adjust the value according to the usage environment, such as when using the software in a network with a slow communication speed.						
Character encoding	<p>Set the character encoding when Japanese is used in file names.</p> <table border="1"> <thead> <tr> <th>Item</th><th>Description</th></tr> </thead> <tbody> <tr> <td>Shift_JIS</td><td>Select this when connecting to an FTP server of a GL series data logger or the like.</td></tr> <tr> <td>UTF-8</td><td>Select this when connecting to a GRM-ONE BASIC FTP server or a server on the cloud.</td></tr> </tbody> </table> <p>* Text garbling may occur even when you set the encoding.</p>	Item	Description	Shift_JIS	Select this when connecting to an FTP server of a GL series data logger or the like.	UTF-8	Select this when connecting to a GRM-ONE BASIC FTP server or a server on the cloud.
Item	Description						
Shift_JIS	Select this when connecting to an FTP server of a GL series data logger or the like.						
UTF-8	Select this when connecting to a GRM-ONE BASIC FTP server or a server on the cloud.						
Export logs	Select this check box to export communication logs. Communication logs are exported to the My document > Graphtec > DownloadApp > Log folder.						

6.3. Main Window

This is the main window that contains the Connection settings window and Timer settings window.

This window can be used to view, download, and delete the files and folders on the connected FTP server.

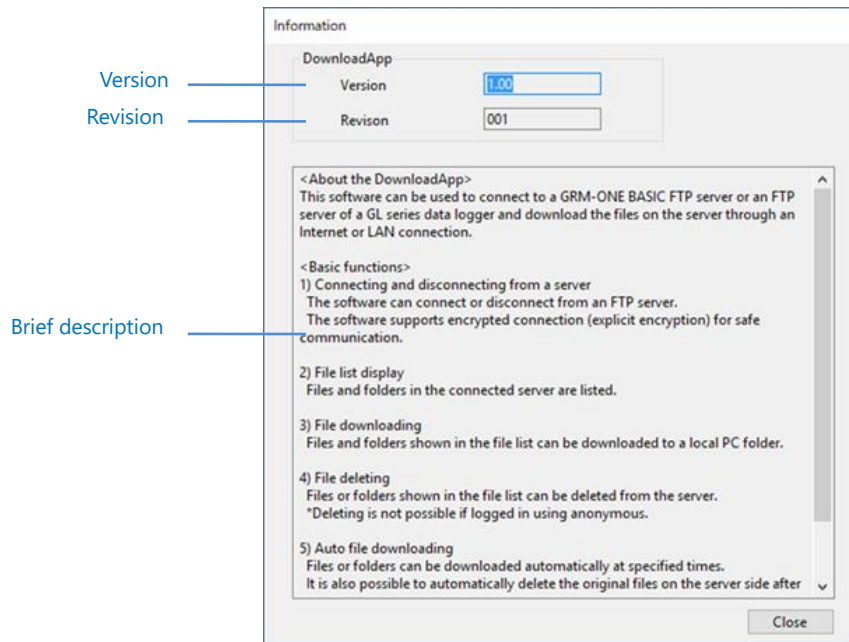


Item	Description
Settings	Opens the connection settings window.
Connect	Starts a connection according to the connection settings.
Host name (address)	Shows the connected host name (address).
Information	Shows the software version and brief descriptions.
PC folder	Shows or sets the download destination folder.
Moves to the parent folder	Moves to the parent folder of the currently displayed FTP server folder. The same action can be performed by pressing the Backspace key.
Folder	Shows the FTP server path.
List of files and folders	Shows a list of files and folders on the FTP server.
Language	Changes the language. To change the language, you need to restart the software.
Timer settings	Opens the Timer settings window for the auto download function.
Start	Executes auto downloading. While auto downloading is in progress, you cannot perform other operations. If you want to perform other operations, stop auto downloading.
File download	Downloads the files or folders selected in the list.

	You can also download by double-clicking a file.
Delete	Deletes the files or folders selected in the list.
Close	Closes the software.

Information

The software version, revision, and brief description are shown.



List of files and folders

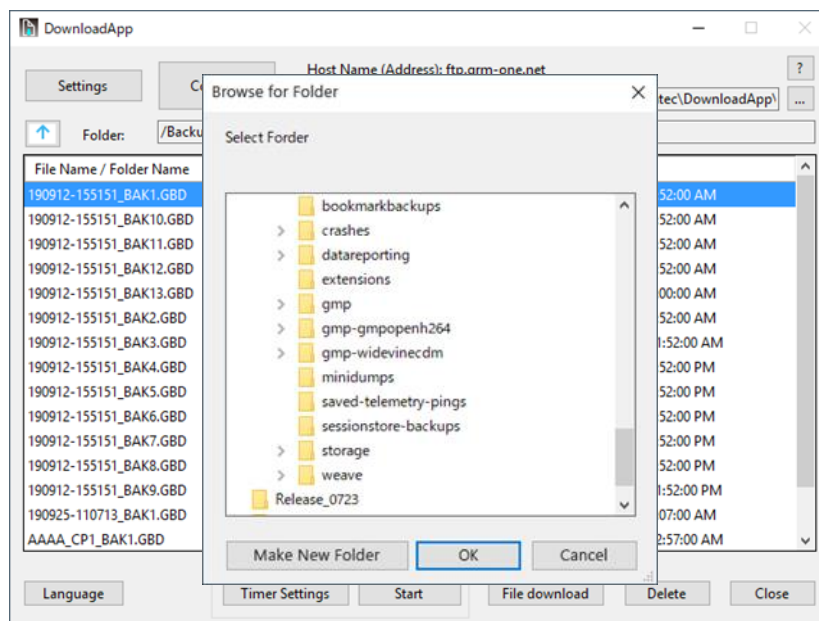
A list of files and folders in the connected FTP server is shown. Press F5 to refresh the list of files and folders.

	File name and folder name	File size	Date
	File Name / Folder Name	File Size	Date
Folder	2019		9/30/2019 4:06:00 AM
	testfile4	100 MB	9/20/2019 6:46:00 AM
File	testfile5	100 MB	9/20/2019 6:54:00 AM

Item	Description
File name and Folder name	Shows the files and folders. Clicking this area sorts the list by file or folder name.
File size	Shows the file size. It is not shown for folders. Clicking this area sorts the list by file size.
Date	Shows the update time of the file or folder. Clicking this area sorts the list by date. Correct dates may not be shown depending on the FTP server.
Folder	Shows folders. Double-click a folder to move into that folder.
File	Shows files.

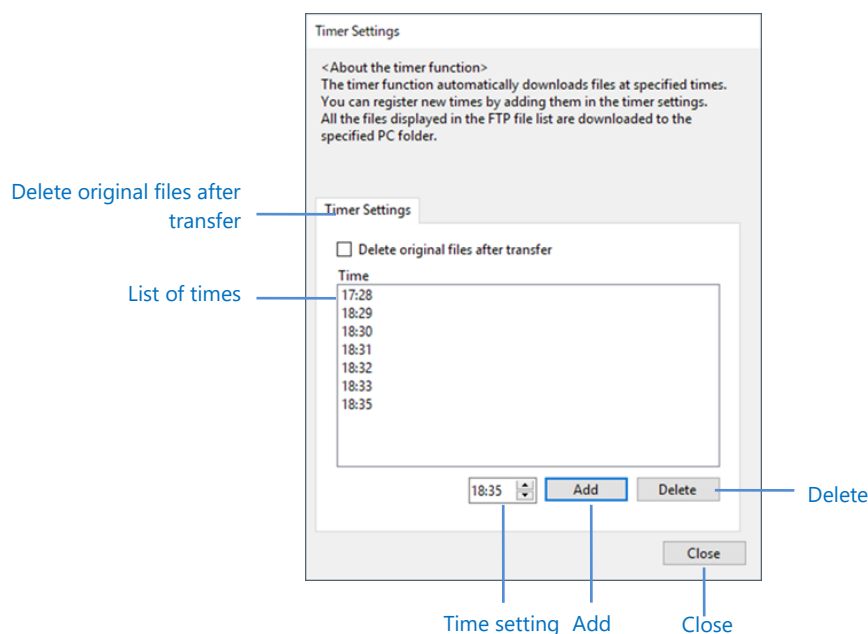
PC folder selection

You can set the local folder to download files and folders into. The PC folder specified in the connection settings is shown.



6.4. Timer Settings Window

The timer function automatically downloads files at specified times. When you register a specific time in the timer settings, downloading starts when the specified time arrives.



Item	Description
Delete original files after transfer	Deletes the original files from the FTP server when auto downloading is completed. The files are not deleted when downloading fails. Do not apply this function to a folder containing files that are being logged on an FTP server of a GL series data logger.
List of times	Shows the times when auto downloading will be executed.
Time setting	Enter the settings for adding a timer. (hour: minute)
Add	Adds a timer for executing auto download. Up to 30 timers can be added.
Delete	Deletes the specified time from the list of times. You can select multiple time entries using the Shift or Ctrl key.
Close	Closes the window.

Check

- When you close the software, the auto download function in progress will also be closed.

Chapter 7 Connection

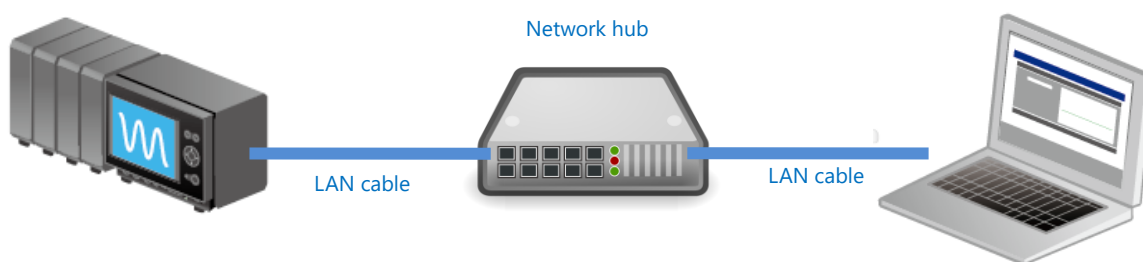
This chapter explains how to connect to an FTP server of a GL series data logger and how to connect to a GRM-ONE BASIC FTP server.

7.1. Connecting to an FTP server of a GL series GL7000

Connection environment

Using a wired LAN cable, connect a GL7000 to the PC through a network hub. Assign the same IP address segment to the GL7000 and PC, and different IP addresses to each.

Example: GL7000: 192.168.0.1, PC: 192.168.0.2



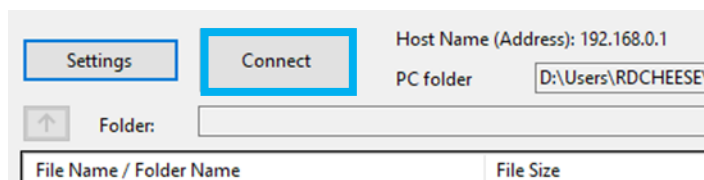
Connection settings

When connecting to a GL7000, enter the connection settings by referring to the following figure.

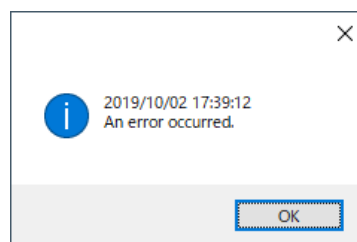
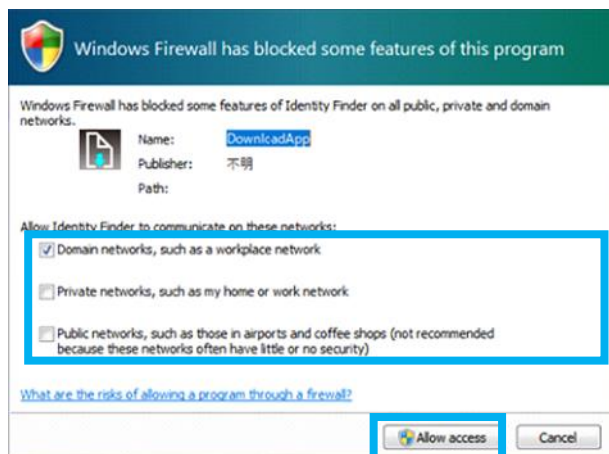
The figure shows two screenshots of the 'Settings' dialog box for the GL7000. The left screenshot shows the 'Basic' tab with the following settings: Host Name (Address): 192.168.0.1, Port number: 21, Encryption: Encryption None, User name: anonymous, Password: [masked], PC folder: D:\Users\RDCHIESE\Documents\Graphtec, and Host's default folder: [empty]. The right screenshot shows the 'Details' tab with the following settings: Passive mode: Off, Time zone: UTC +09:00, Communication timeout: 10 Sec (1 - 1000), Character encoding: Shift_JIS (selected), and Export logs: [unchecked].

1. Set the host name (address) to **192.168.0.1**.
2. Set the port number to **21**.
3. Set the encryption to **Encryption None**

4. Select the **anonymous** check box.
5. Set the passive mode to **Off**.
6. Set the character encoding to **Shift_JIS**.
7. Click **OK** to close the window.
8. The settings are applied to the main window. Click **Connect**.



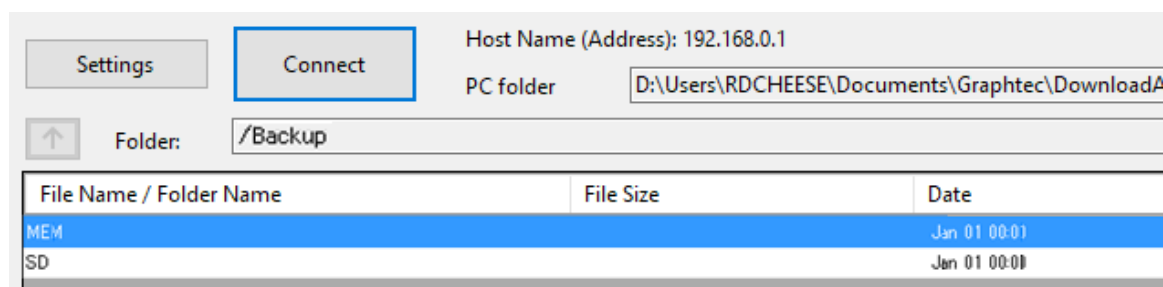
9. When the software is started for the first time, a firewall access confirmation window may appear. If this occurs, select the check box of the network to allow access, and select **Allow access**.



* Notes

If you allow access on this window, a timeout error may occur when establishing a connection. If an error occurs, click **Connect** again.

10. When a connection is established successfully, the main window will show files and folders.

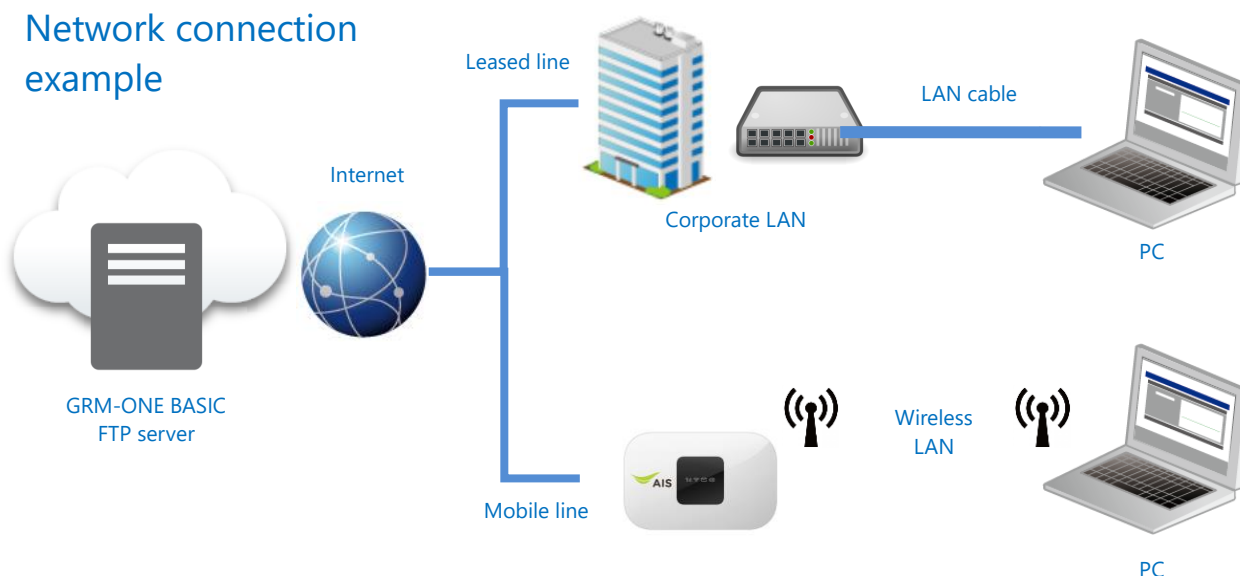


7.2. Connecting to a GRM-ONE BASIC FTP Server

Connection environment

Subscribe to GRM-ONE BASIC in advance, and prepare for connection. Set up the appropriate Internet connection environment.

Network connection example



Connection settings

Enter the connection settings by referring to the following figure.

The figure shows two screenshots of the 'Settings' dialog box for GRM-ONE BASIC. The left screenshot shows the 'Basic' tab, and the right screenshot shows the 'Details' tab.

Basic Tab:

- Host selection: GRM-ONE BASIC Default (Delete button)
- Host settings: Label name: GRM-ONE BASIC Default
- Basic tab selected, Details tab disabled
- Host Name (Address): ftp.grm-one.net
- Port number: 21
- Encryption: Explicit encryption (dropdown menu)
- User name: AAAAAAAA (checkbox anonymous)
- Pass word: *****
- PC folder: D:\Users\RDCHIESE\Documents\Graphtec
- Host's default folder: (empty field)
- Buttons: OK, Cancel

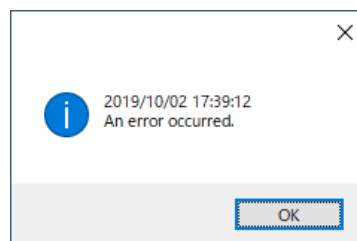
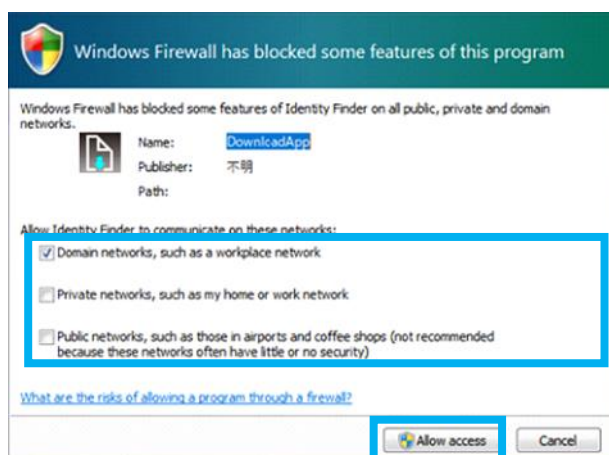
Details Tab:

- Host selection: GRM-ONE BASIC Default (Delete button)
- Host settings: Label name: GRM-ONE BASIC Default
- Basic tab disabled, Details tab selected
- Passive mode: On (dropdown menu)
- Time zone: UTC (dropdown menu)
- Communication timeout: 100 Sec (1 - 1000)
- Character encoding: UTF-8 (radio buttons: Shift_JIS, UTF-8)
- Export logs: (checkbox)
- Buttons: OK, Cancel

Set the host name (address) to the FTP host name allocated by GRM-ONE BASIC.

1. Set the port number to **21**.
2. Set the encryption to **Explicit encryption**.

3. For the user name, enter the FTP host name allocated by GRM-ONE BASIC.
4. For the password, enter the password allocated by GRM-ONE BASIC.
5. Set the passive mode to **On**.
6. Set the character encoding to **UTF-8**.
7. Click **OK** to close the window.
8. The settings are applied to the main window. Click **Connect**.
9. When the software is started for the first time, a firewall access confirmation window may appear. If this occurs, select the check box of the network to allow access, and select **Allow access**.



* Notes

If you allow access on this window, a timeout error may occur when establishing a connection. If an error occurs, click **Connect** again.

10. When a connection is established successfully, the main window will show files and folders.

Chapter 8 Downloading and Deleting Files

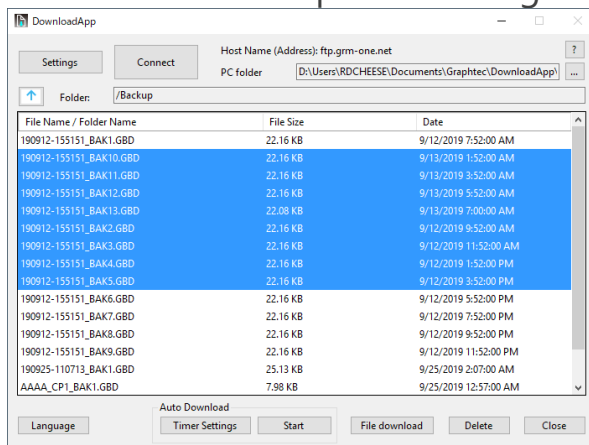
8.1. Specified File Download Function

This function downloads files and folders that you specify to a local area.

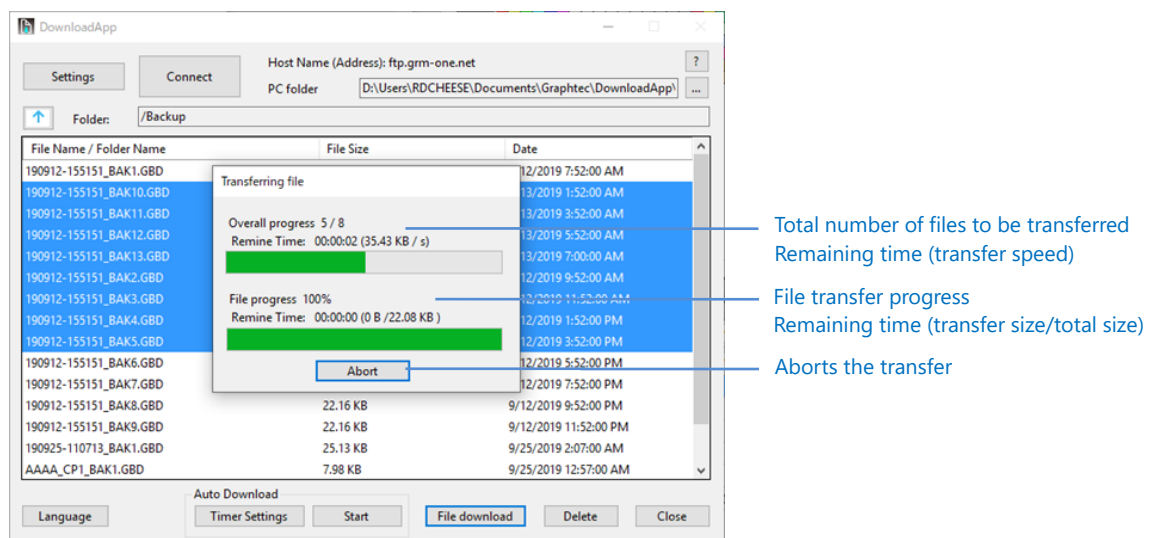
* Notes

Do not download a file that is being uploaded to the FTP server.

1. Select the files you want to transfer.
Selected files and folders are shown in blue.
You can select multiple files using the Shift or Ctrl key.



2. Click **File download** to download the files to the specified PC folder path.



3. To cancel the transfer, click **Abort**.

8.2. File Deletion Function

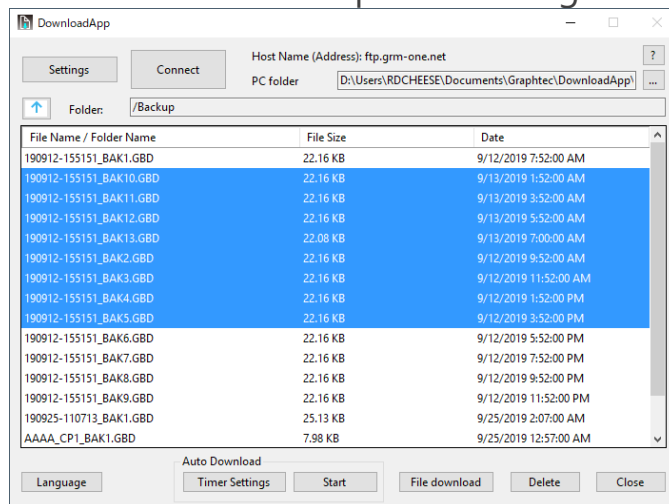
This function deletes files and folders that you specify.

* Notes

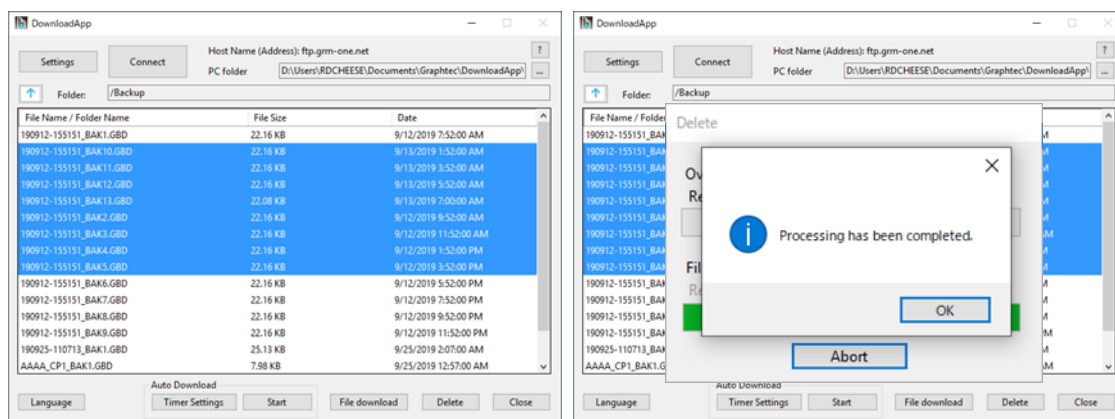
- You cannot delete files if you log into the FTP server using anonymous.
- Do not delete a file that is being uploaded to the server.

1. Select the files you want to delete.

You can select multiple files using the Shift or Ctrl key.



2. When you click **Delete**, files and folders are deleted from the server.



8.3. Auto Download Function

This function downloads files automatically at specified times.

Up to 30 time entries can be registered.

If the next time arrives while a download is in progress, downloading is not executed for that time.

1. Under Timer settings, set the times to perform auto download.
2. Set a time of your choice, and click **Add**.

The 'Timer Settings' dialog box contains the following elements:

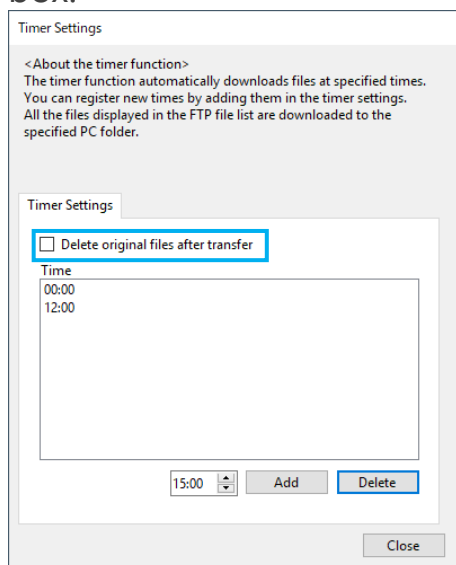
- Timer Settings** (Title)
- <About the timer function>**
The timer function automatically downloads files at specified times.
You can register new times by adding them in the timer settings.
All the files displayed in the FTP file list are downloaded to the specified PC folder.
- Timer Settings** (Tab)
- ☐ Delete original files after transfer
- Time**
List of times: 00:00, 12:00 (left); 00:00, 12:00, 15:00 (right, with 15:00 highlighted).
- Time input field showing 12:00 (left) or 15:00 (right).
- Add** button (left); **Add** button highlighted in blue (right).
- Delete** button (both).
- Close** button (both).

3. You can delete a time entry by selecting it and clicking **Delete**.

The 'Timer Settings' dialog box contains the following elements:

- Timer Settings** (Title)
- <About the timer function>**
The timer function automatically downloads files at specified times.
You can register new times by adding them in the timer settings.
All the files displayed in the FTP file list are downloaded to the specified PC folder.
- Timer Settings** (Tab)
- ☐ Delete original files after transfer
- Time**
List of times: 00:00, 12:00, 15:00 (left, with 15:00 highlighted); 00:00, 12:00 (right).
- Time input field showing 15:00 (left).
- Add** button (both).
- Delete** button (left); **Delete** button highlighted in blue (right).
- Close** button (both).

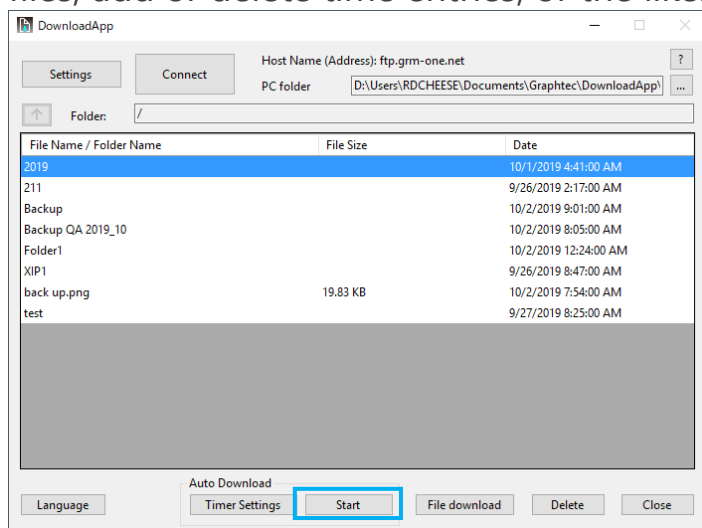
4. If you want to delete files and folders from the server after transferring them to a local area, select the **Delete original files after transfer** check box.



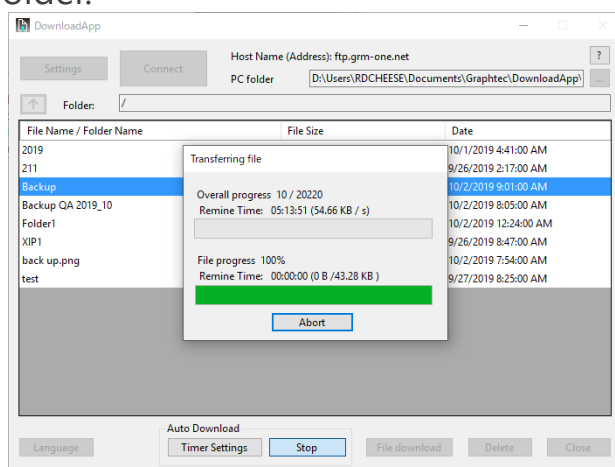
* Check

The "Delete original files after transfer" function is applied only to the auto download function. It is not applied to manual downloading.

5. Close the Timer settings window, and click **Start** to start auto downloading. When a timer is being set, you cannot move folders, download or delete files, add or delete time entries, or the like.



6. When a specified time arrives, downloading starts automatically.
The files and folders shown in the current file list are transferred to the PC folder.



* Notes

- When you close the software, the auto download function in progress will also be closed.
 - The displayed files and folders are transferred, not the selected files and folders.
 - If a folder containing files that are being logged on a GL series data logger is selected for auto downloading, downloading will not work properly. Stop the logging when using this function.
-

Chapter 9 Specifications

Type	Item	Description
General	Starting multiple instances of the software	Supported
	Language	English, Japanese, French, German, Chinese, Korean, Spanish, Russian
Communication	Supported protocols	FTP, FTPS
	Number of host registrations	10 max.
	Anonymous login	Supported
	Encryption method	Explicit
	TLS version	1.2
	Passive mode	Off/On
	Proxy connection	Not supported
	Character encoding	Shift_JIS, UTF-8 * Applied to file names
	Communication timeout	1 to 1000 seconds (default: 10 seconds)
Function	File list display	File and folder names, file size, date
	Number of files downloaded	1 file, 1 folder, multiple files, multiple folders, mixed
	Number of simultaneous downloading	1
	Number of files deleted	1 file, 1 folder, multiple files, multiple folders, mixed
	Number of simultaneous deletions	1
	File move function	Not available
	File copy function	Not available
	Auto download	Supported
	Number of time registrations	30 max.
Others	Log export function	Available

- The contents of this document are subject to change without notice.

DownloadApp Instruction Manual
APS(DownloadApp)-UM-151

Issued on November 19,
2021
3rd edition

Graphtec Corporation

GRAPHTEC