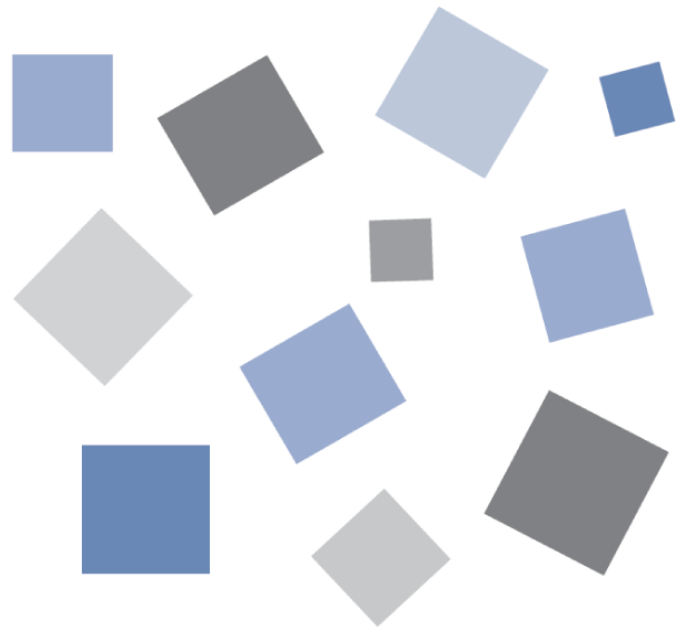


Download **App**

Application Software

USER' S MANUAL

MANUAL No. APS(DownloadApp)-UM-151



GRAPHTEC

Contents

| | | |
|---|--|----|
| Chapter 1 | Introduction | 4 |
| 1.1. | Usage Notes | 4 |
| 1.2. | Trademarks | 4 |
| 1.3. | Copyright | 4 |
| Chapter 2 | Operating Environment | 5 |
| Chapter 3 | Software Installation | 6 |
| Chapter 4 | Overview | 7 |
| 4.1. | Connection Example | 7 |
| Example of Connecting to a G-REMOTE FTP Server | | 7 |
| Example of Connecting to an FTP Server of a GL Series Data Logger | | 8 |
| 4.2. | Basic Functions | 9 |
| Connecting and disconnecting from an FTP server | | 9 |
| File list display | | 9 |
| File downloading | | 9 |
| File deleting | | 9 |
| Auto file downloading | | 10 |
| Chapter 5 | Starting and Closing the Software | 11 |
| 5.1. | Starting the Software | 11 |
| 5.2. | Closing the Software | 12 |
| Chapter 6 | Windows | 13 |
| 6.1. | Window Structure | 13 |
| 6.2. | Connection settings window | 14 |
| Common settings window | | 14 |
| Basic settings window | | 15 |
| Advanced settings window | | 16 |
| 6.3. | Main Window | 17 |
| Information | | 18 |
| List of files and folders | | 19 |
| PC folder selection | | 19 |
| 6.4. | Timer Settings Window | 20 |
| Chapter 7 | Connection | 21 |
| 7.1. | Connecting to an FTP server of a GL series GL7000 Plus | 21 |
| Connection environment | | 21 |
| Connection settings | | 21 |
| 7.2. | Connecting to a G-REMOTE FTP Server | 23 |
| Connection environment | | 23 |

| | |
|--|----|
| Connection settings | 23 |
| Chapter 8 Downloading and Deleting Files | 25 |
| 8.1. Specified File Download Function | 25 |
| 8.2. File Deletion Function | 26 |
| 8.3. Auto Download Function | 27 |
| Chapter 9 Specifications | 30 |

Chapter 1 Introduction

Thank you for using this software.

This software is a Windows desktop application that connects to a G-REMOTE cloud service FTP server or an FTP server of a GL series data logger and downloads log files and the like.

1.1. Usage Notes

1. Copying or transferring any or all of the contents of this document is prohibited.
2. The contents of this manual and the specification of the product are subject to change without notice.
3. Every effort has been made to ensure the quality and reliability of this document and product, but should you find unclear points or errors, please contact Graphtec.
4. Graphtec will not be held responsible for the effects caused as a result of using this document or product, regardless of the statement 3.
5. The performance of this product may not be satisfied depending on the operating environment. If this occurs, review your operating environment.

1.2. Trademarks

- Microsoft and Windows are registered trademarks or trademarks of Microsoft Corporation in the United States and/or other countries.
- .NET Framework is a registered trademark or trademark of Microsoft Corporation in the United States and/or other countries.
- Other company names, logos, product names, and the like are trademarks or registered trademarks of their respective companies.

1.3. Copyright

Graphtec Corporation owns the entire copyright to this instruction manual.

Chapter 2 Operating Environment

The following table shows the PC requirements.

| Item | Requirement |
|---------|---|
| OS | Windows 11 (64bit) * Meet system requirements of the OS Windows10 (32Bit/64Bit) * Operating systems that the OS manufacturer no longer supports are also not supported by Graphtec. * .NET Framework 4.5 or later is required. * Please use a PC that meets the system requirements. |
| CPU | Intel Core 2 Duo or better recommended |
| Memory | 1 GB or more recommended |
| HDD | 32 GB or more recommended |
| Display | Display resolution 800x600 or more, 65535 colors or more (16 bit) |
| Network | Environment that allows Internet connection is required when connecting to G-DRIVE Service of G-REMOTE. * Environment that allows communication through port 21 and ports 30000 to 35000 are required to establish an unencrypted connection. Environment that allows communication through port 21, 990 and ports 30000 to 35000 are required to establish an encrypted connection. For details on communication ports, consult your network administrator in charge of your Internet connection. |

* Check

- Running multiple instances of this software may require an operating environment that is better than the recommended environment.
 - GRM-ONE_BASIC changed its service name to G-REMOTE in February 2024, and GRM-ONE_BASIC's FTP service is still available as G-DRIVE.
-

Chapter 3 Software Installation

This software can be downloaded from our website.

Download "DownloadApp" of the applicable measuring instrument product at the following URL.

<https://www.graphteccorp.com/support/software/logger/>

Decompress the downloaded file, run it, and follow the install instructions to install the software.

* Check

- When this software is installed on the PC in which the Microsoft .NET Framework 4.5 is not installed, the online installer of .NET Framework 4.5 starts when the installer starts. Follow the installer's instructions to install.

When not connected to the network, execute dotnetfx45_full_x86_x64.exe in the copied folder to install.

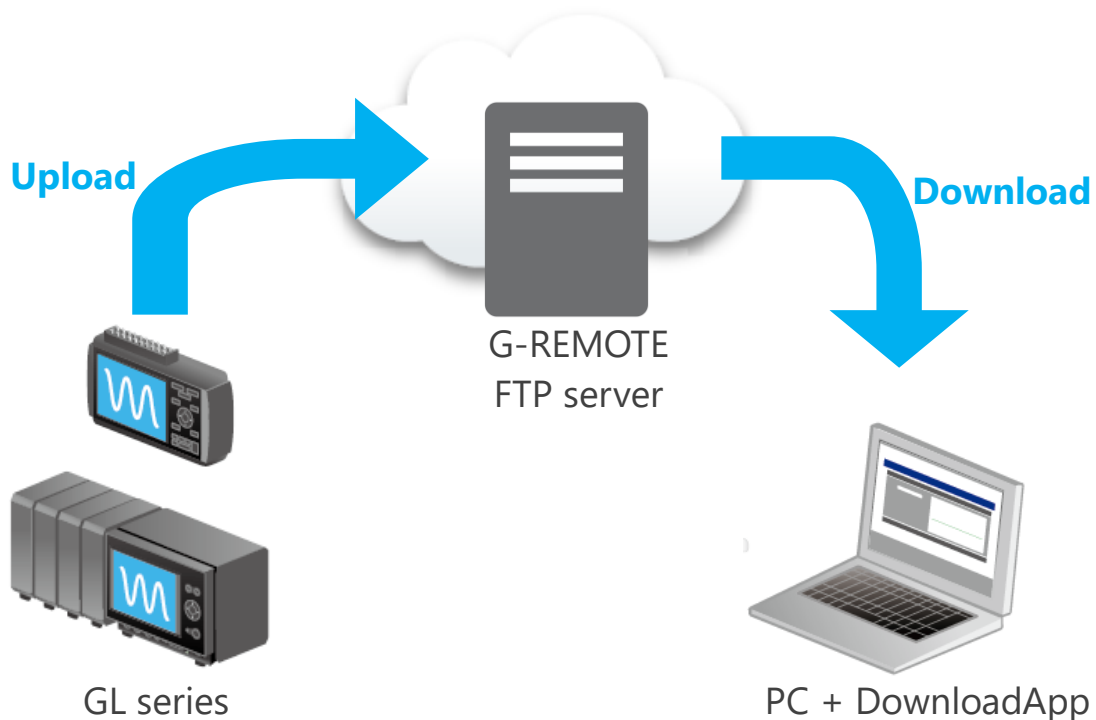
Chapter 4 Overview

This software can be used to connect to a G-REMOTE FTP server or an FTP server of a GL series data logger and download the files on the FTP server through an Internet or LAN connection.

4.1. Connection Example

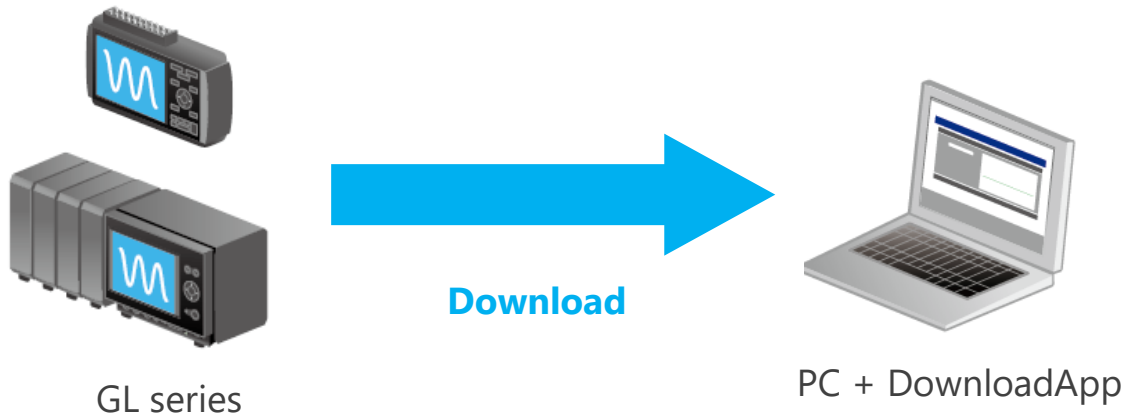
Example of Connecting to a G-REMOTE FTP Server

On a GL series data logger equipped with a wired or wireless LAN interface that can connect to the Internet, data is automatically uploaded to a G-REMOTE FTP server using the FTP backup function. This software can be used to connect to the FTP server and download the uploaded log files.



Example of Connecting to an FTP Server of a GL Series Data Logger

This software is connected to an FTP server of a GL series data logger equipped with a wired or wireless LAN interface, and log files are downloaded.



4.2. Basic Functions

The basic functions are described below.

Connecting and disconnecting from an FTP server

This software can connect and disconnect from a compatible FTP server, such as a G-REMOTE FTP server or an FTP server of a GL series data logger. In addition, the software supports encrypted connection (explicit encryption) for safe communication.

File list display

Files and folders in the connected FTP server are listed.

* Notes

Using full-width characters may cause text garbling. When connecting to a GL series data logger, use the "Shift JIS" setting.

File downloading

Files and folders shown in the file list can be downloaded to a local PC folder. All uploaded files can be downloaded, regardless of their type.

File deleting

Files or folders shown in the file list can be deleted from the FTP server.

* Check

- You cannot delete files if you log into the FTP server using anonymous.
 - Be careful when deleting files.
-

Auto file downloading

Files or folders can be downloaded automatically at specified times. In addition, it is also possible to automatically delete the original files on the FTP server side after downloading.

* Check

- Downloading may not work properly if auto downloading is performed on a folder containing files in the middle of logging on the GL series.
 - If the download destination already has a file with the same name, downloading is not performed. But, the original file will be deleted.
-

Chapter 5 Starting and Closing the Software

5.1. Starting the Software

After installing the software, from the Windows taskbar, select the Start button, Graphtec, DownloadApp, and then DownloadApp to start the software.

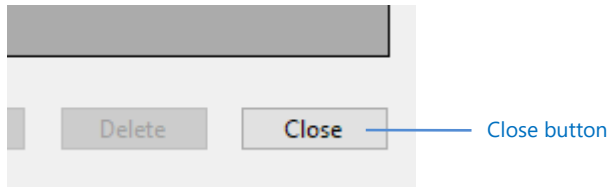
When you start the software for the first time, a language selection window opens.

Select the language of your choice.



5.2. Closing the Software

To close the software, click Close in the lower right of the main window.



* Check

- Settings that were entered last are saved when you close a software. The settings are not saved if you close the software in a different manner (e.g., forced termination).
 - When you close the software, the auto download function in progress will also be closed.
-

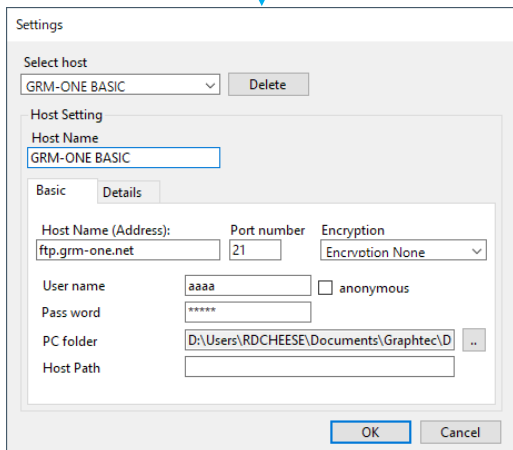
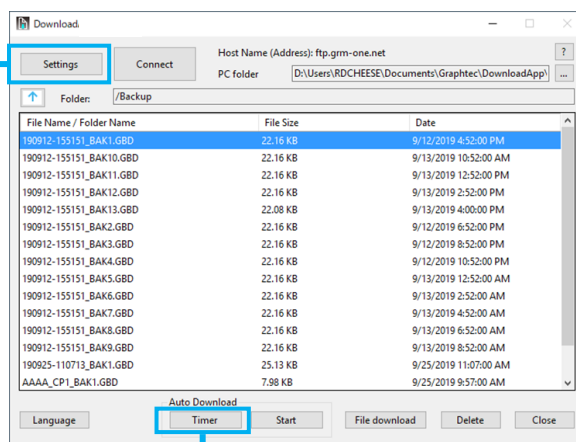
Chapter 6 Windows

6.1. Window Structure

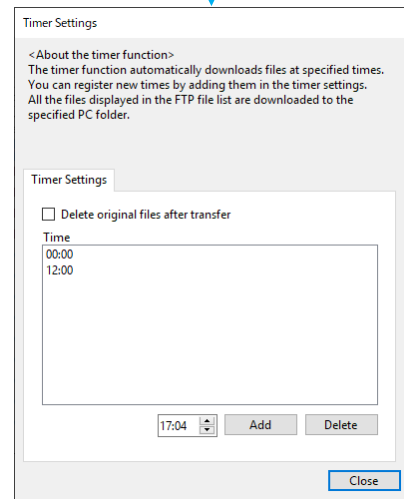
The window structure of this software is shown below.

- Main window
- Connection settings window
- Timer settings window

Main window



Connection settings window

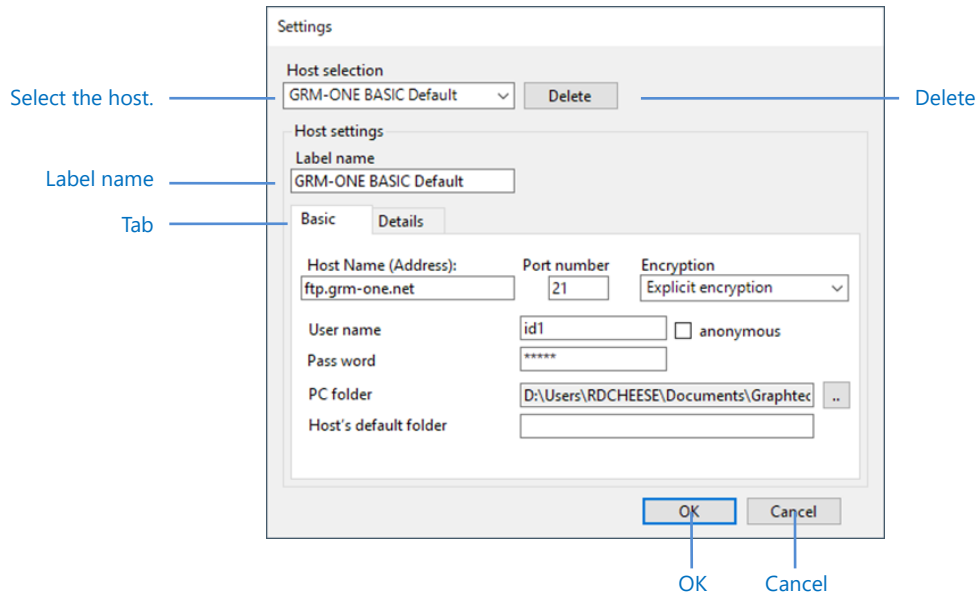


Timer settings window

6.2. Connection settings window

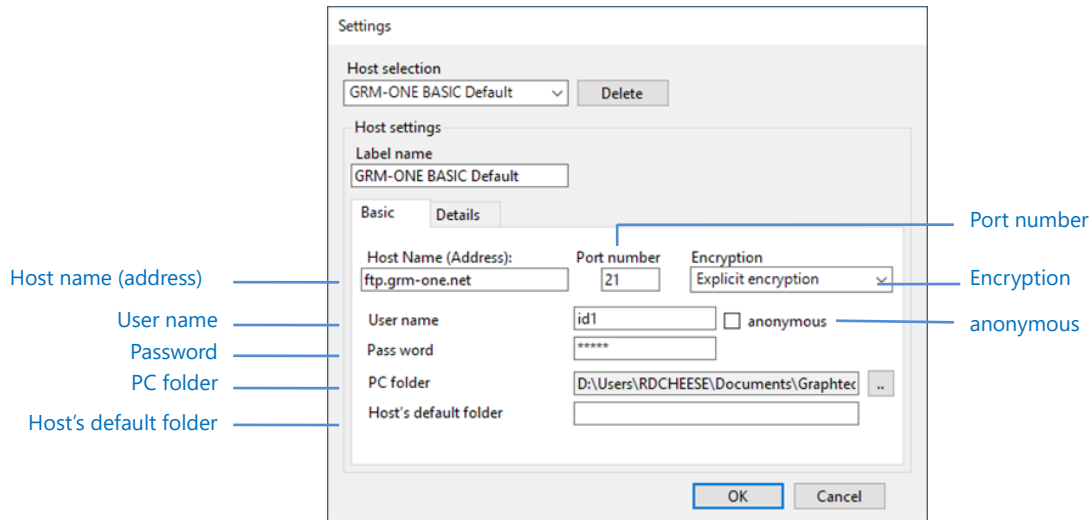
This window is used to specify settings for connecting to an FTP server.

Common settings window



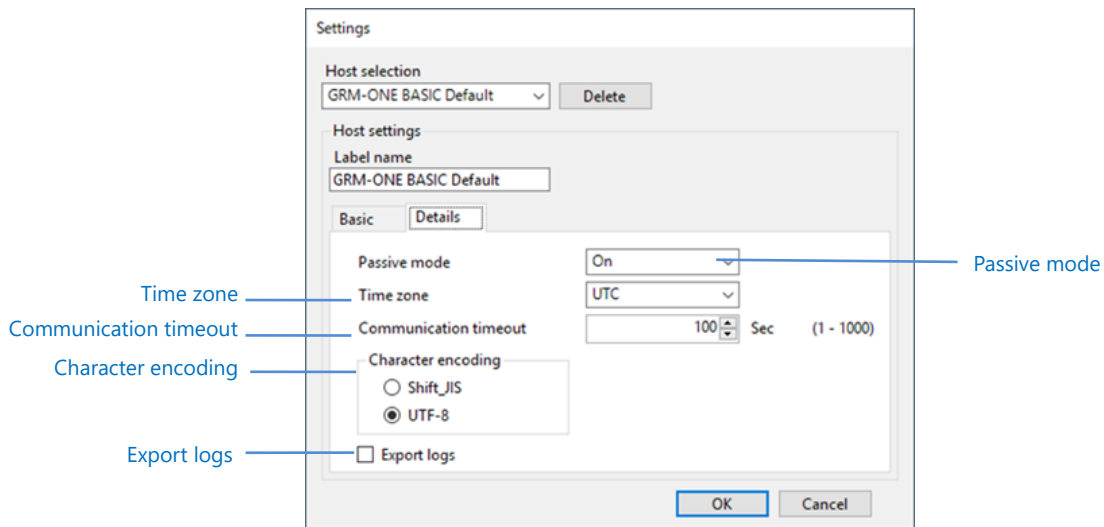
| Item | Description |
|----------------|--|
| Host selection | Select the connection destination. When the software is started the first time, only "Default" and "G-REMOTE (formerly known as GRM-ONE BASIC default)" is registered. Up to 10 hosts can be registered. |
| Delete | Deletes a registered host. |
| Label name | Enter the label name. You cannot register a host if this is left blank. |
| Tab | Switches between basic settings and advanced settings. |
| OK | Applies the settings and closes the window. If a new label name was entered, a new host will be registered. If you click this button when an existing host is selected, the existing settings will be changed. |
| Cancel | Closes the window without applying the settings. |

Basic settings window



| Item | Description | | | | | | |
|-----------------------|---|------|-------------|---------------|-------------------------|---------------------|------------------------------|
| Host name (address) | Enter the host name or IP address of the FTP server. | | | | | | |
| Port number | Enter the port number. The default number is 21. | | | | | | |
| Encryption | Enables or disables encryption. <table border="1" data-bbox="507 1048 1401 1171"> <thead> <tr> <th>Item</th> <th>Description</th> </tr> </thead> <tbody> <tr> <td>No encryption</td> <td>Encryption is disabled.</td> </tr> <tr> <td>Explicit encryption</td> <td>Explicit encryption is used.</td> </tr> </tbody> </table> <p>* For details on the encryption method, consult the administrator in charge of the FTP server.</p> | Item | Description | No encryption | Encryption is disabled. | Explicit encryption | Explicit encryption is used. |
| Item | Description | | | | | | |
| No encryption | Encryption is disabled. | | | | | | |
| Explicit encryption | Explicit encryption is used. | | | | | | |
| User name | Enter the login user name of the FTP server. | | | | | | |
| anonymous | Select this check box to log in using the anonymous user. If you log in using the anonymous user, only downloading as possible. Login may not be possible depending on the FTP server. | | | | | | |
| Password | Enter the login password of the FTP server. | | | | | | |
| PC folder | Set the default download destination folder. | | | | | | |
| Host's default folder | Set the default folder on the FTP server. | | | | | | |

Advanced settings window

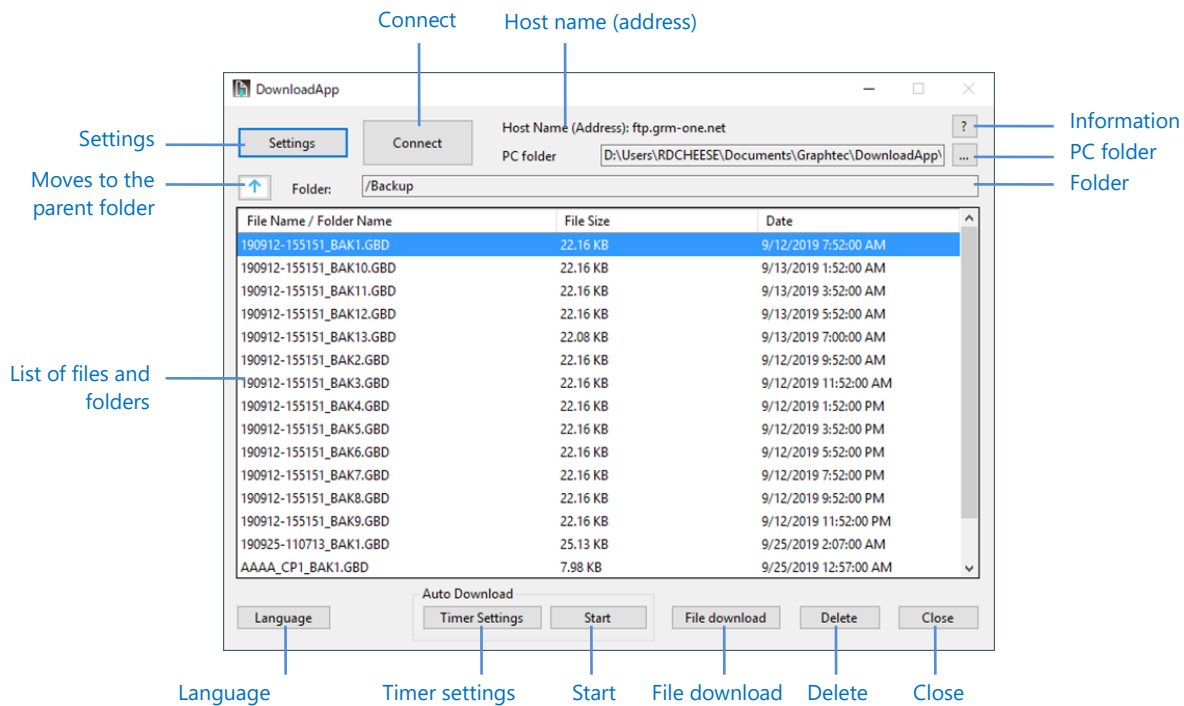


| Item | Description | | | | | | |
|-----------------------|---|------|-------------|-----------|--|-------|--|
| Passive mode | <p>Sets the passive mode.</p> <table border="1"> <thead> <tr> <th>Item</th> <th>Description</th> </tr> </thead> <tbody> <tr> <td>Off</td> <td>Use this setting to communicate with an FTP server in a normal network environment.</td> </tr> <tr> <td>On</td> <td>Use this setting to communicate with an external FTP server in a firewall environment.</td> </tr> </tbody> </table> <p>* If you cannot connect to the FTP server, regardless of whether the passive mode is on or off, consult the FTP server administrator or network administrator.</p> | Item | Description | Off | Use this setting to communicate with an FTP server in a normal network environment. | On | Use this setting to communicate with an external FTP server in a firewall environment. |
| Item | Description | | | | | | |
| Off | Use this setting to communicate with an FTP server in a normal network environment. | | | | | | |
| On | Use this setting to communicate with an external FTP server in a firewall environment. | | | | | | |
| Time zone | The date shown in the file/folder list is adjusted according to the region. | | | | | | |
| Communication timeout | Set the communication timeout with the FTP server. Adjust the value according to the usage environment, such as when using the software in a network with a slow communication speed. | | | | | | |
| Character encoding | <p>Set the character encoding when Japanese is used in file names.</p> <table border="1"> <thead> <tr> <th>Item</th> <th>Description</th> </tr> </thead> <tbody> <tr> <td>Shift_JIS</td> <td>Select this when connecting to an FTP server of a GL series data logger or the like.</td> </tr> <tr> <td>UTF-8</td> <td>Select this when connecting to a G-REMOTE FTP server or a server on the cloud.</td> </tr> </tbody> </table> <p>* Text garbling may occur even when you set the encoding.</p> | Item | Description | Shift_JIS | Select this when connecting to an FTP server of a GL series data logger or the like. | UTF-8 | Select this when connecting to a G-REMOTE FTP server or a server on the cloud. |
| Item | Description | | | | | | |
| Shift_JIS | Select this when connecting to an FTP server of a GL series data logger or the like. | | | | | | |
| UTF-8 | Select this when connecting to a G-REMOTE FTP server or a server on the cloud. | | | | | | |
| Export logs | Select this check box to export communication logs. Communication logs are exported to the My document > Graphtec > DownloadApp > Log folder. | | | | | | |

6.3. Main Window

This is the main window that contains the Connection settings window and Timer settings window.

This window can be used to view, download, and delete the files and folders on the connected FTP server.

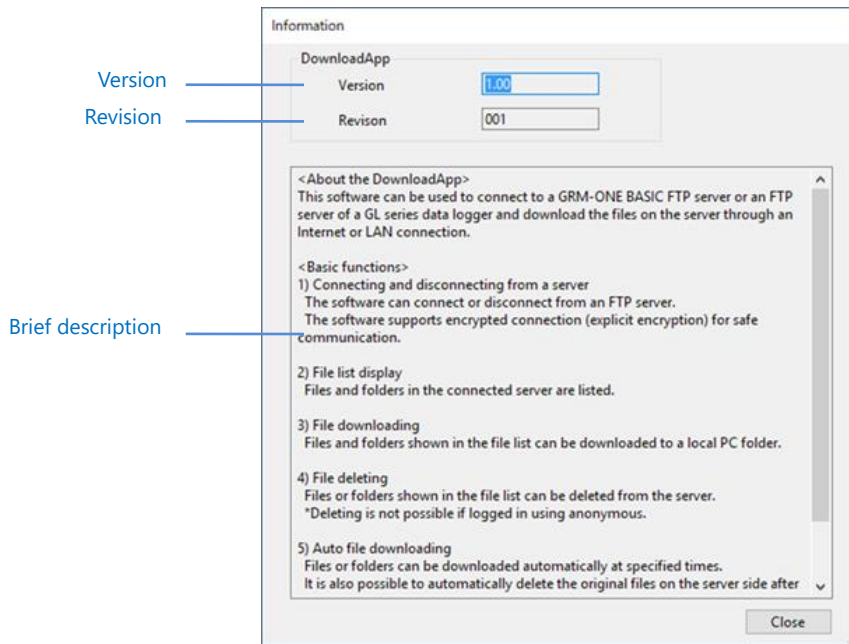


| Item | Description |
|----------------------------|--|
| Settings | Opens the connection settings window. |
| Connect | Starts a connection according to the connection settings. |
| Host name (address) | Shows the connected host name (address). |
| Information | Shows the software version and brief descriptions. |
| PC folder | Shows or sets the download destination folder. |
| Moves to the parent folder | Moves to the parent folder of the currently displayed FTP server folder. The same action can be performed by pressing the Backspace key. |
| Folder | Shows the FTP server path. |
| List of files and folders | Shows a list of files and folders on the FTP server. |
| Language | Changes the language. To change the language, you need to restart the software. |
| Timer settings | Opens the Timer settings window for the auto download function. |
| Start | Executes auto downloading. While auto downloading is in progress, you cannot perform other operations. If you want to perform other operations, stop auto downloading. |
| File download | Downloads the files or folders selected in the list. |

| | |
|--------|--|
| | You can also download by double-clicking a file. |
| Delete | Deletes the files or folders selected in the list. |
| Close | Closes the software. |

Information

The software version, revision, and brief description are shown.



List of files and folders

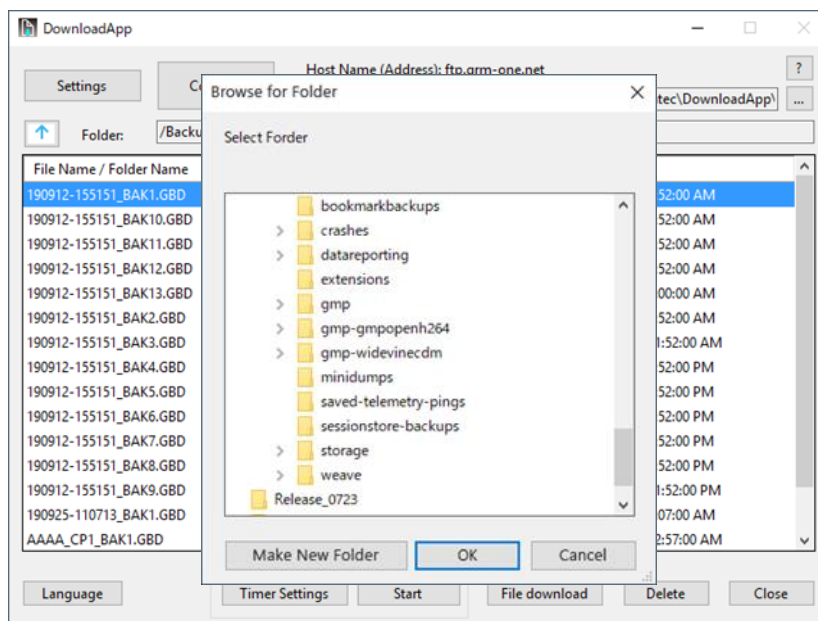
A list of files and folders in the connected FTP server is shown. Press F5 to refresh the list of files and folders.

| | File name and folder name | File size | Date |
|--------|---------------------------|-----------|----------------------|
| | File Name / Folder Name | File Size | Date |
| Folder | 2019 | | 9/30/2019 4:06:00 AM |
| | testfile4 | 100 MB | 9/20/2019 6:46:00 AM |
| File | testfile5 | 100 MB | 9/20/2019 6:54:00 AM |

| Item | Description |
|---------------------------|---|
| File name and Folder name | Shows the files and folders. Clicking this area sorts the list by file or folder name. |
| File size | Shows the file size. It is not shown for folders. Clicking this area sorts the list by file size. |
| Date | Shows the update time of the file or folder. Clicking this area sorts the list by date. Correct dates may not be shown depending on the FTP server. |
| Folder | Shows folders. Double-click a folder to move into that folder. |
| File | Shows files. |

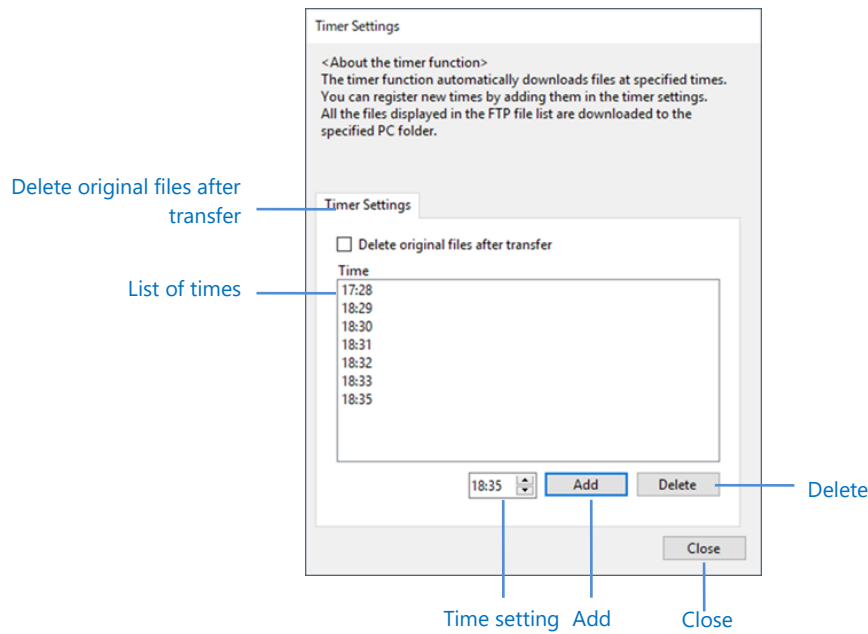
PC folder selection

You can set the local folder to download files and folders into. The PC folder specified in the connection settings is shown.



6.4. Timer Settings Window

The timer function automatically downloads files at specified times. When you register a specific time in the timer settings, downloading starts when the specified time arrives.



| Item | Description |
|--------------------------------------|---|
| Delete original files after transfer | Deletes the original files from the FTP server when auto downloading is completed. The files are not deleted when downloading fails. Do not apply this function to a folder containing files that are being logged on an FTP server of a GL series data logger. |
| List of times | Shows the times when auto downloading will be executed. |
| Time setting | Enter the settings for adding a timer. (hour: minute) |
| Add | Adds a timer for executing auto download. Up to 30 timers can be added. |
| Delete | Deletes the specified time from the list of times. You can select multiple time entries using the Shift or Ctrl key. |
| Close | Closes the window. |

Check

- When you close the software, the auto download function in progress will also be closed.

Chapter 7 Connection

This chapter explains how to connect to an FTP server of a GL series data logger and how to connect to a G-REMOTE FTP server.

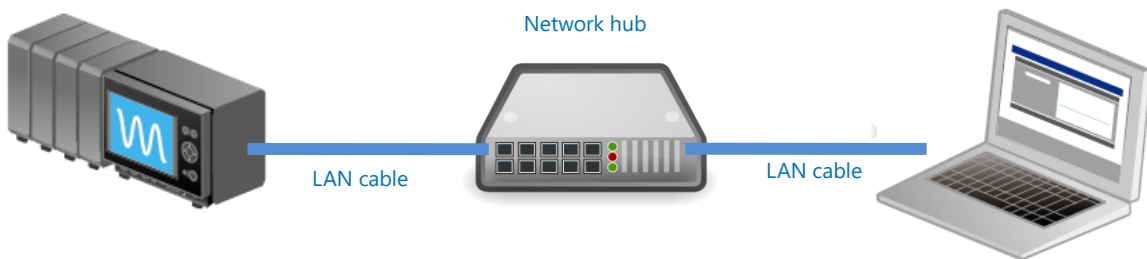
7.1. Connecting to an FTP server of a GL series GL7000 Plus

Connection environment

Using a wired LAN cable, connect a GL7000 Plus to the PC through a network hub.

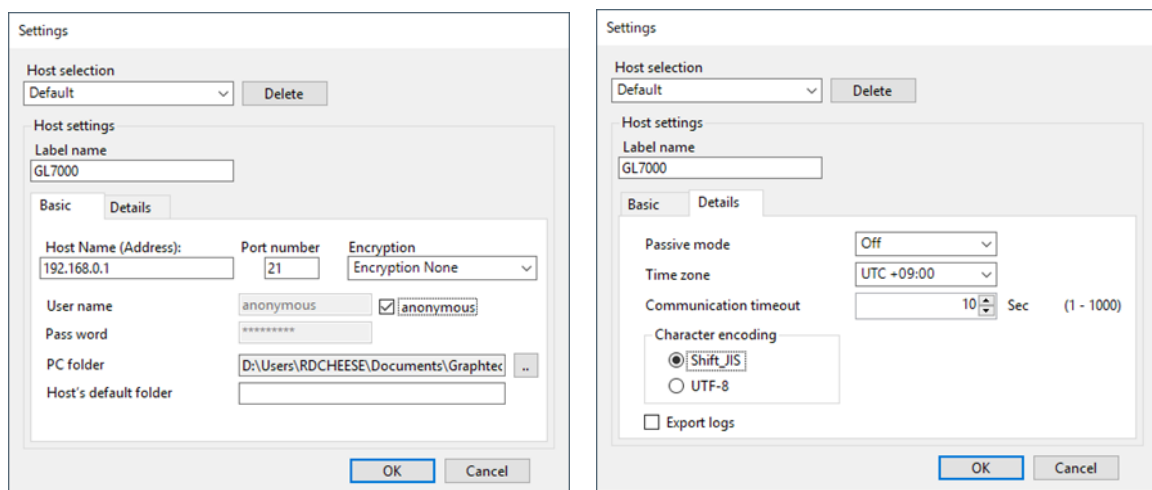
Assign the same IP address segment to the GL7000 Plus and PC, and different IP addresses to each.

Example: GL7000: 192.168.0.1, PC: 192.168.0.2



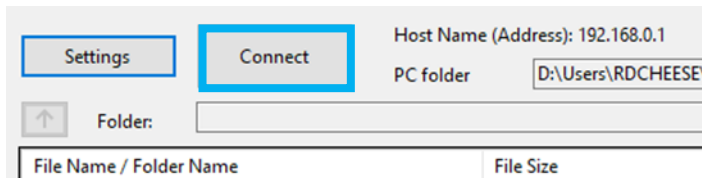
Connection settings

When connecting to a GL7000 Plus, enter the connection settings by referring to the following figure.

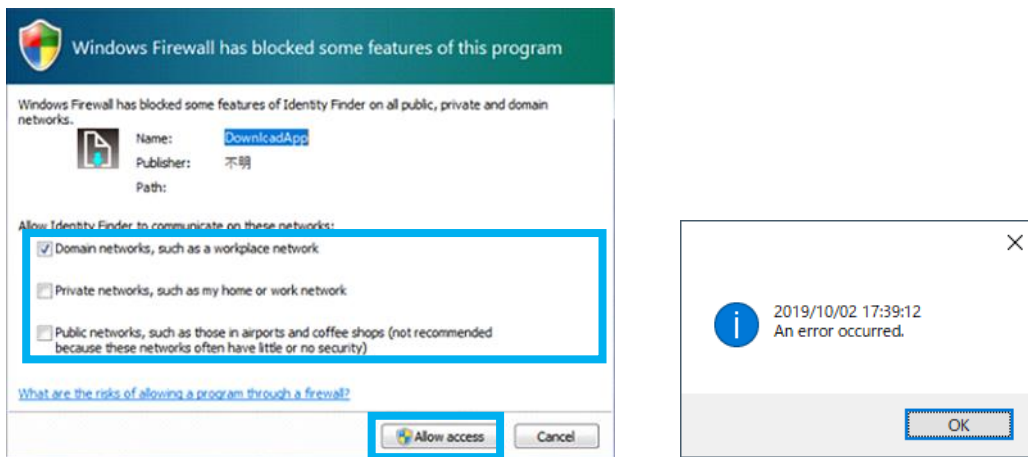


1. Set the host name (address) to **192.168.0.1**.
2. Set the port number to **21**.

3. Set the encryption to **Eryption None**
4. Select the **anonymous** check box.
5. Set the passive mode to **Off**.
6. Set the character encoding to **Shift_JIS**.
7. Click **OK** to close the window.
8. The settings are applied to the main window. Click **Connect**.



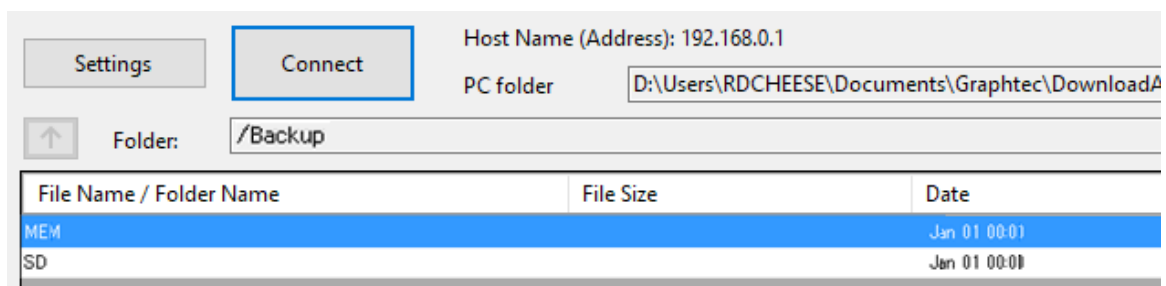
9. When the software is started for the first time, a firewall access confirmation window may appear. If this occurs, select the check box of the network to allow access, and select **Allow access**.



* Notes

If you allow access on this window, a timeout error may occur when establishing a connection. If an error occurs, click **Connect** again.

10. When a connection is established successfully, the main window will show files and folders.

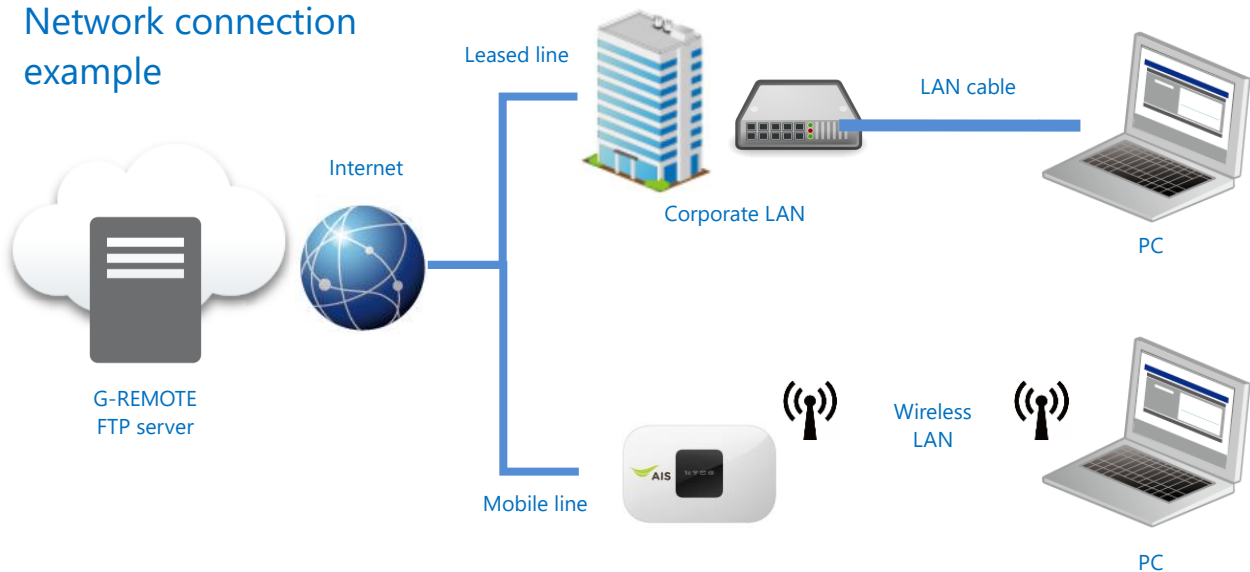


7.2. Connecting to a G-REMOTE FTP Server

Connection environment

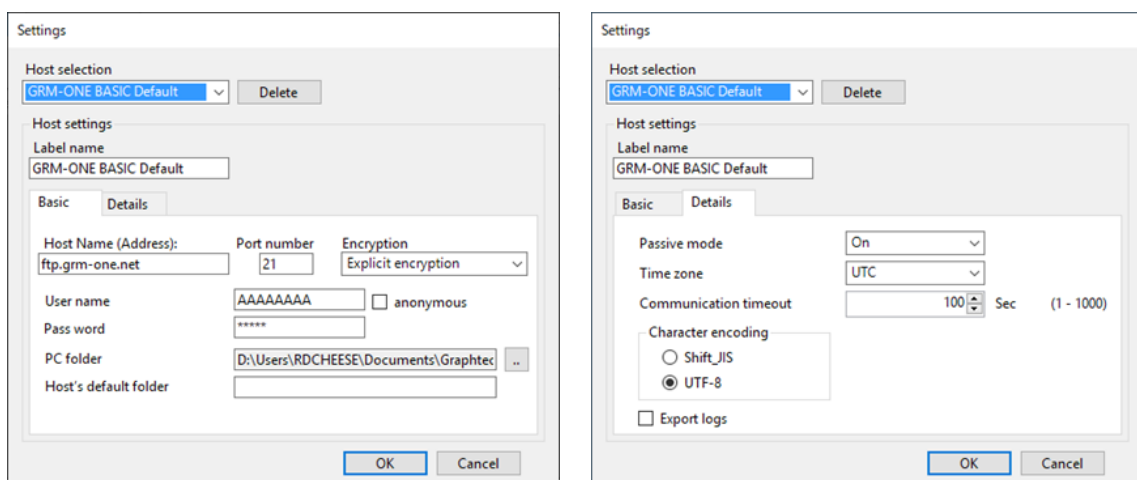
Subscribe to G-REMOTE in advance, and prepare for connection. Set up the appropriate Internet connection environment.

Network connection example



Connection settings

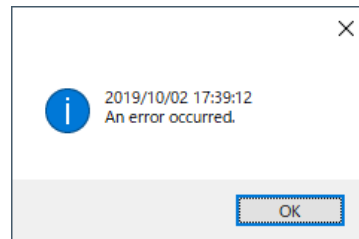
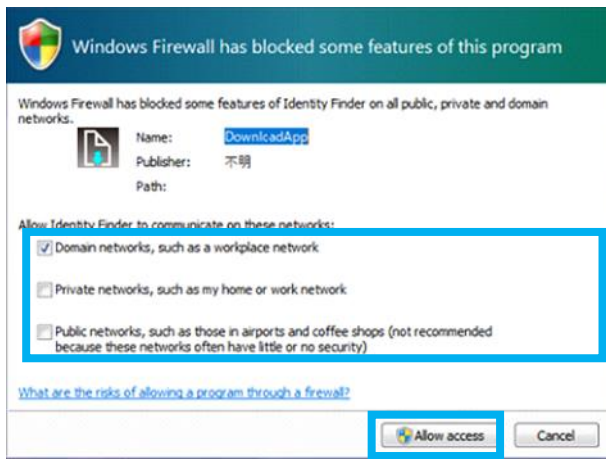
Enter the connection settings by referring to the following figure.



Set the host name (address) to the FTP host name allocated by G-REMOTE.

1. Set the port number to **21**.
2. Set the encryption to **Explicit encryption**.

3. For the user name, enter the FTP host name allocated by G-REMOTE.
4. For the password, enter the password allocated by G-REMOTE.
5. Set the passive mode to **On**.
6. Set the character encoding to **UTF-8**.
7. Click **OK** to close the window.
8. The settings are applied to the main window. Click **Connect**.
9. When the software is started for the first time, a firewall access confirmation window may appear. If this occurs, select the check box of the network to allow access, and select **Allow access**.



* Notes

If you allow access on this window, a timeout error may occur when establishing a connection. If an error occurs, click **Connect** again.

10. When a connection is established successfully, the main window will show files and folders.

Chapter 8 Downloading and Deleting Files

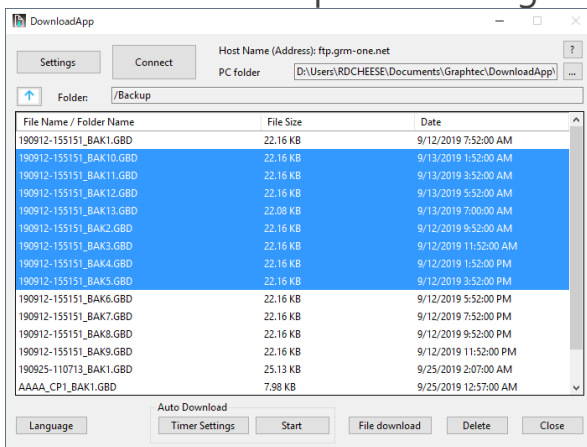
8.1. Specified File Download Function

This function downloads files and folders that you specify to a local area.

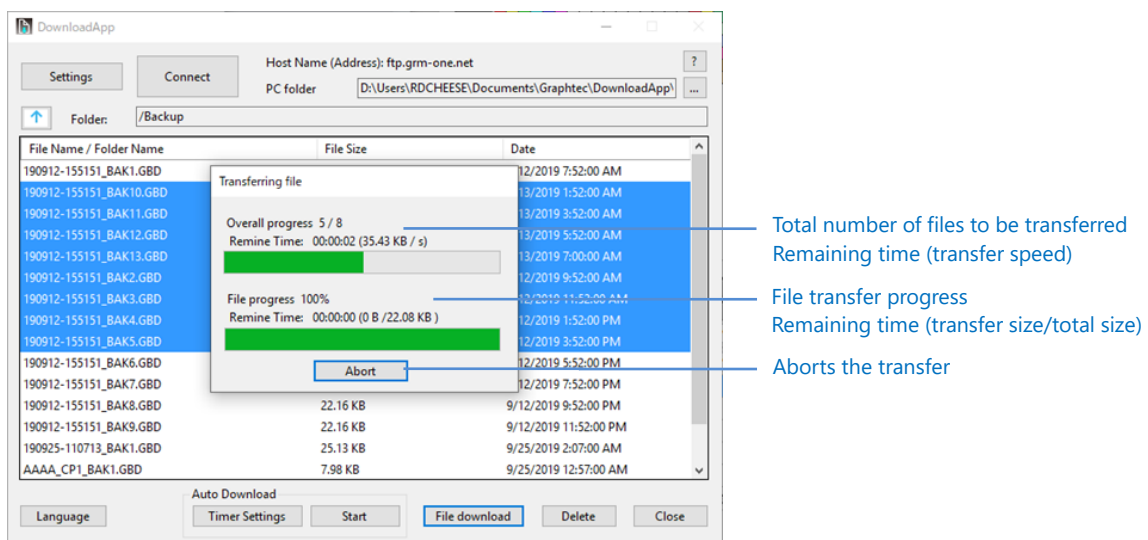
* Notes

Do not download a file that is being uploaded to the FTP server.

1. Select the files you want to transfer.
Selected files and folders are shown in blue.
You can select multiple files using the Shift or Ctrl key.



2. Click **File download** to download the files to the specified PC folder path.



3. To cancel the transfer, click **Abort**.

8.2. File Deletion Function

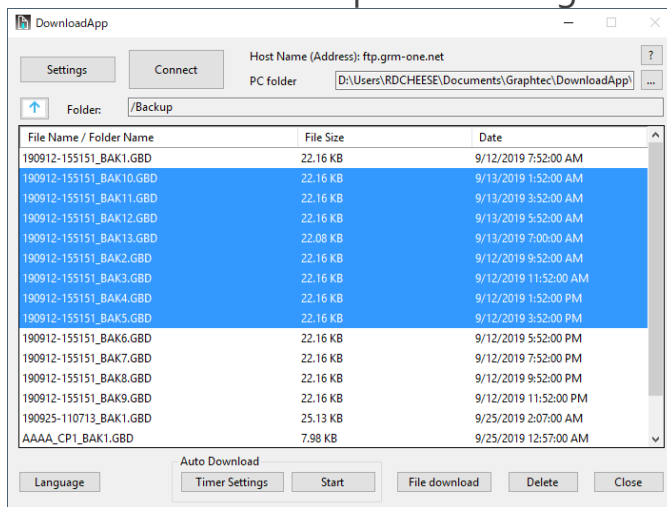
This function deletes files and folders that you specify.

* Notes

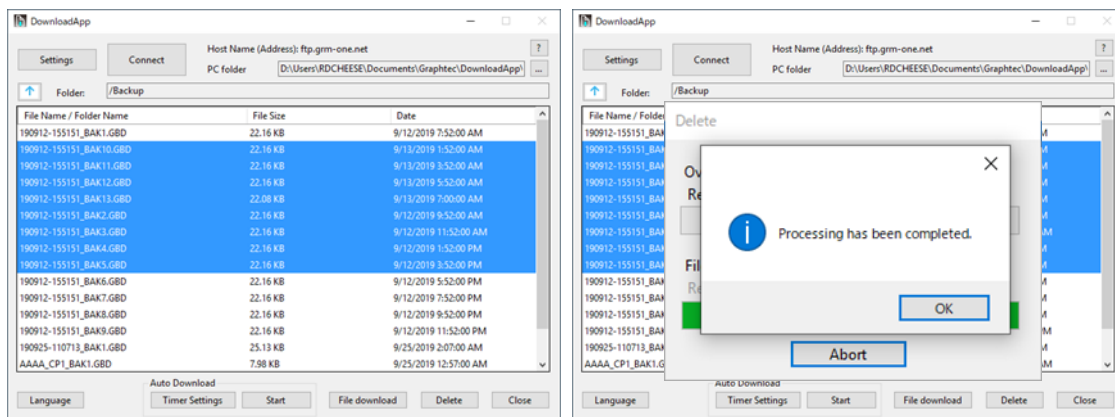
- You cannot delete files if you log into the FTP server using anonymous.
- Do not delete a file that is being uploaded to the server.

1. Select the files you want to delete.

You can select multiple files using the Shift or Ctrl key.



2. When you click **Delete**, files and folders are deleted from the server.



8.3. Auto Download Function

This function downloads files automatically at specified times.

Up to 30 time entries can be registered.

If the next time arrives while a download is in progress, downloading is not executed for that time.

1. Under Timer settings, set the times to perform auto download.
2. Set a time of your choice, and click **Add**.

Timer Settings

<About the timer function>
The timer function automatically downloads files at specified times.
You can register new times by adding them in the timer settings.
All the files displayed in the FTP file list are downloaded to the specified PC folder.

Timer Settings

Delete original files after transfer

Time

00:00
12:00

12:00 Add Delete

Close

Timer Settings

<About the timer function>
The timer function automatically downloads files at specified times.
You can register new times by adding them in the timer settings.
All the files displayed in the FTP file list are downloaded to the specified PC folder.

Timer Settings

Delete original files after transfer

Time

00:00
12:00
15:00

15:00 Add Delete

Close

3. You can delete a time entry by selecting it and clicking **Delete**.

Timer Settings

<About the timer function>
The timer function automatically downloads files at specified times.
You can register new times by adding them in the timer settings.
All the files displayed in the FTP file list are downloaded to the specified PC folder.

Timer Settings

Delete original files after transfer

Time

00:00
12:00
15:00

15:00 Add Delete

Close

Timer Settings

<About the timer function>
The timer function automatically downloads files at specified times.
You can register new times by adding them in the timer settings.
All the files displayed in the FTP file list are downloaded to the specified PC folder.

Timer Settings

Delete original files after transfer

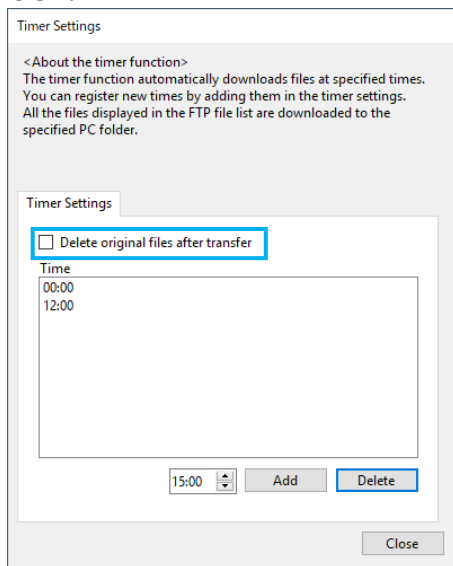
Time

00:00
12:00

15:00 Add Delete

Close

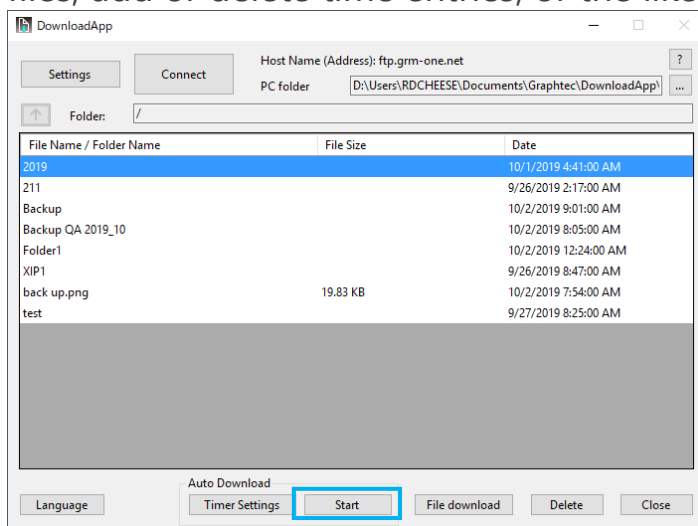
4. If you want to delete files and folders from the server after transferring them to a local area, select the **Delete original files after transfer** check box.



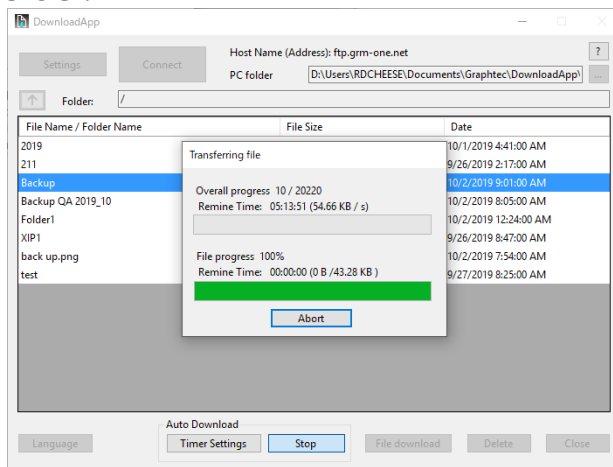
* Check

The “Delete original files after transfer” function is applied only to the auto download function. It is not applied to manual downloading.

5. Close the Timer settings window, and click **Start** to start auto downloading. When a timer is being set, you cannot move folders, download or delete files, add or delete time entries, or the like.



6. When a specified time arrives, downloading starts automatically. The files and folders shown in the current file list are transferred to the PC folder.



* Notes

- When you close the software, the auto download function in progress will also be closed.
- The displayed files and folders are transferred, not the selected files and folders.
- If a folder containing files that are being logged on a GL series data logger is selected for auto downloading, downloading will not work properly. Stop the logging when using this function.

Chapter 9 Specifications

| Type | Item | Description |
|------------------------------|---|--|
| General | Starting multiple instances of the software | Supported |
| | Language | English, Japanese, French, German, Chinese, Korean, Spanish, Russian |
| Communication | Supported protocols | FTP, FTPS |
| | Number of host registrations | 10 max. |
| | Anonymous login | Supported |
| | Encryption method | Explicit |
| | TLS version | 1.2 |
| | Passive mode | Off/On |
| | Proxy connection | Not supported |
| | Character encoding | Shift_JIS, UTF-8 * Applied to file names |
| Function | Communication timeout | 1 to 1000 seconds (default: 10 seconds) |
| | File list display | File and folder names, file size, date |
| | Number of files downloaded | 1 file, 1 folder, multiple files, multiple folders, mixed |
| | Number of simultaneous downloading | 1 |
| | Number of files deleted | 1 file, 1 folder, multiple files, multiple folders, mixed |
| | Number of simultaneous deletions | 1 |
| | File move function | Not available |
| | File copy function | Not available |
| | Auto download | Supported |
| Number of time registrations | 30 max. | |
| Others | Log export function | Available |

- The contents of this document are subject to change without notice.

DownloadApp Instruction Manual
APS(DownloadApp)-UM-151

Issued on April 12, 2024
4th edition

Graphtec Corporation

GRAPHTEC